

WHAT IS YANMAR® SMARTASSIST?



What is SmartAssist?

The SmartAssist is the Yanmar® diagnostic software and tool that works on the AIRMAN® PDS185S air compressors. It allows the tech to read and clear codes, as well as perform service regenerations.

SMARTASSIST
Direct

What does SmartAssist include?

When you purchase the SmartAssist kit from ANA, the kit includes:

- (1) SmartAssist Interface Box
- (1) 6-Pin ECU Connector
- (1) USB A-B Cable
- (1) Durable Plastic Case with Foam Interior
- Initial Software License and Set-up Assistance

GETTING STARTED WITH SMARTASSIST



1. Contact ANA

Get started with your SmartAssist by calling ANA at (562-450-3570 x 3)



2. Purchase SmartAssist

Purchase both the license for an account and the interface tool (unless you already have one).



3. Establish Yanmar Account

Once your company is invoiced for the purchase, ANA will contact Yanmar and set up your account.



4. Download SmartAssist

After your account is created, you will be able to download the software and start diagnosing your equipment.

HOW TO DOWNLOAD THE SOFTWARE

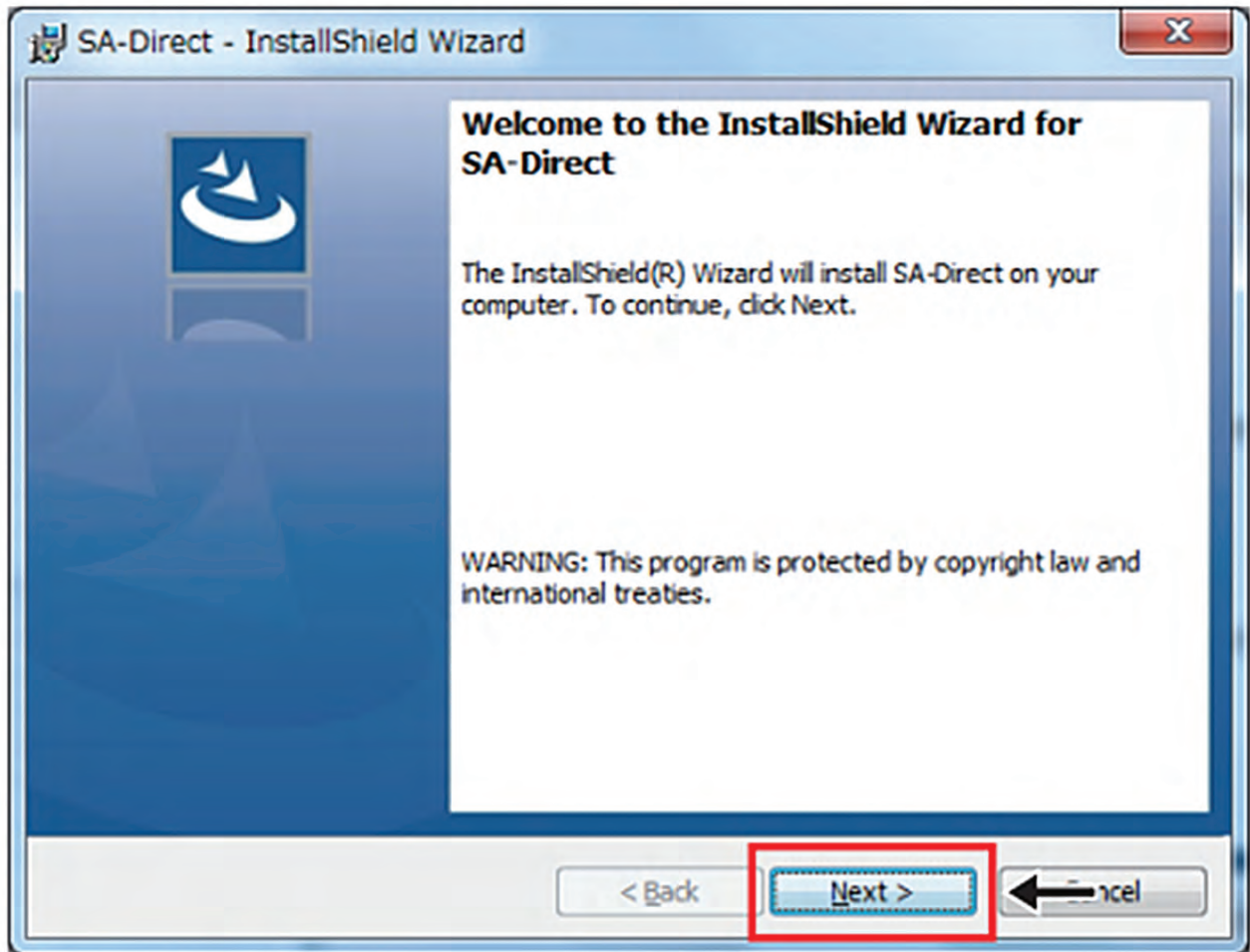


How to Download SmartAssist

Once your Yanmar account is set up, Yanmar will email you and provide a link that will have a download available.

After you download that file, you will see this icon on your desktop, click to start to run the program.

HOW TO DOWNLOAD THE SOFTWARE



After double clicking the icon, you will be able to start downloading via InstallShield.

HOW TO DOWNLOAD THE SOFTWARE

Application form for SMARTASSIST-Direct

Application type * ☒ New ☐ Change ☐ Cancel ** : Required for new applications, changes or cancellations

Application date * 5/9/2019 (Year/Month/Date)

Company name ** Demo **YDS Company code** * XC14179

Department Demo (**: Required code if registered.)

Country ** USA

Delivery address for the interface box, contract and application documents:

Postal Code **	90630
Address- Street, City, State	11100 Hope st Cypress , CA
Telephone**	562-450-3570- ext 113
(Fax)	562-450-3570
Name**	Mike Niemela
E-Mail**	mn Niemela@anacorp.com

License Mode

*Required for new applications, for changes

☒ Click on the box and choose the Mode

Agriculture	
Construction	
Industrial Engine	

* Under the Expert Service agreement, the annual service fee depending on the number of interface boxes applies.
Please contact YANMAR for details.

Number of necessary interface boxes 1 pcs ☐

*Required for new applications, for changes

Desired start date DEMO (Year/Month/Date)

Desired delivery date (Year/Month/Date)

Trining Date (Year/Month/Date)


* The annual service fee depends on the number of interface boxes. Please contact your provider for detail

* To find the license serial number, go to Help (H) of SMARTASSIST Direct, click 'Version Information, open the Workstation Information screen, and check under License Information.

Users to be Registered * Required for new applications for changes ☒ Click on the box and choose the condition

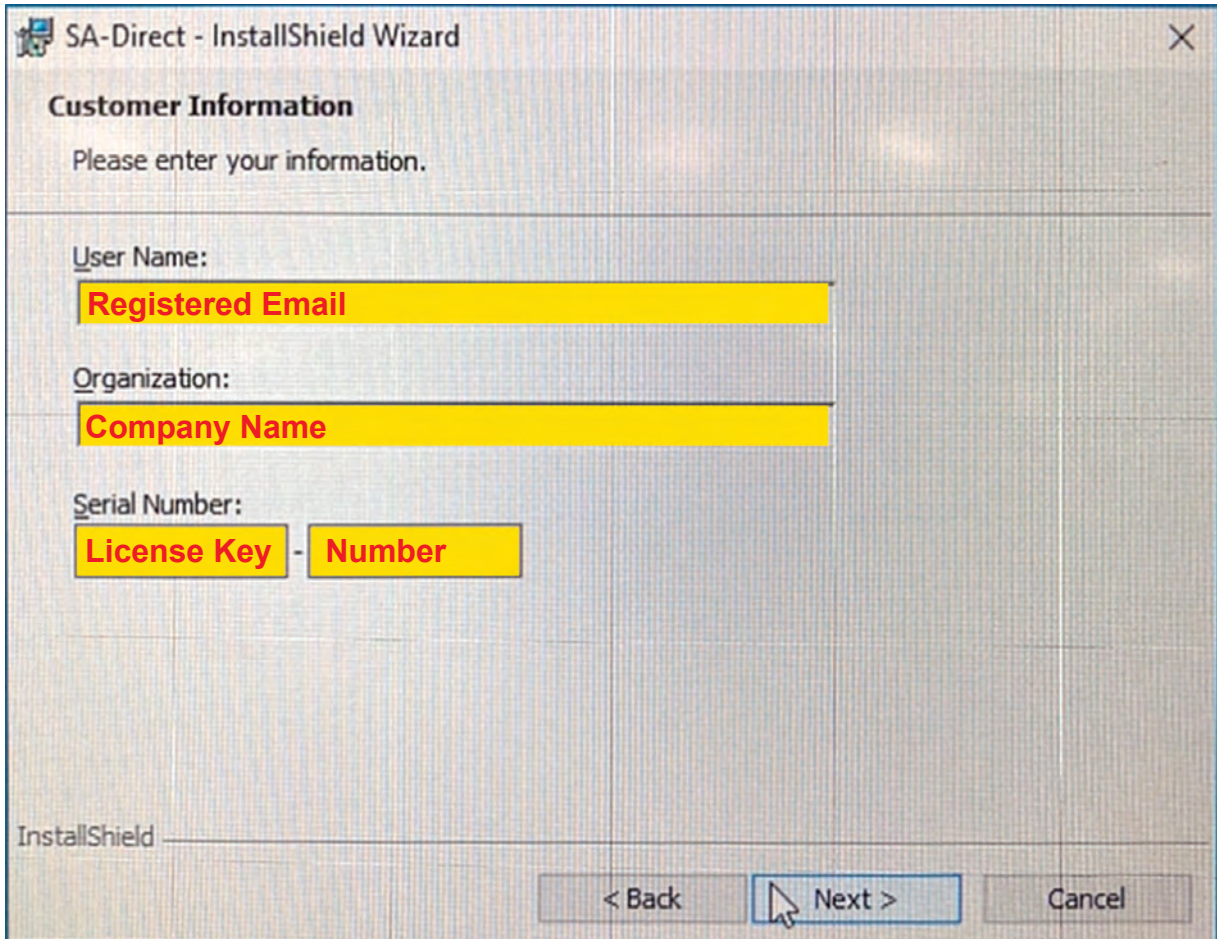
No.	Name(local language)	E-mail	YDS user ID
1	DEMO	Demo@anacorp.com	12334567
2			

License Key – adsf12e5e-79389718



Use the application form that is provided by ANA (example above) to enter Username, Organization and Serial Number.

HOW TO DOWNLOAD THE SOFTWARE



The screenshot shows a window titled "SA-Direct - InstallShield Wizard". The main heading is "Customer Information" with the instruction "Please enter your information." Below this are three input fields: "User Name:" with a yellow box containing "Registered Email", "Organization:" with a yellow box containing "Company Name", and "Serial Number:" with a yellow box containing "License Key" followed by a hyphen and a box containing "Number". At the bottom right are three buttons: "< Back", "Next >" (which is highlighted with a mouse cursor), and "Cancel". The "InstallShield" logo is visible in the bottom left corner of the window.

From the application form provided by ANA (See page 5), complete the fields shown above in SmartAssist.

HOW TO LOG IN TO THE SOFTWARE



Once the download is complete, this icon will show on your desktop.

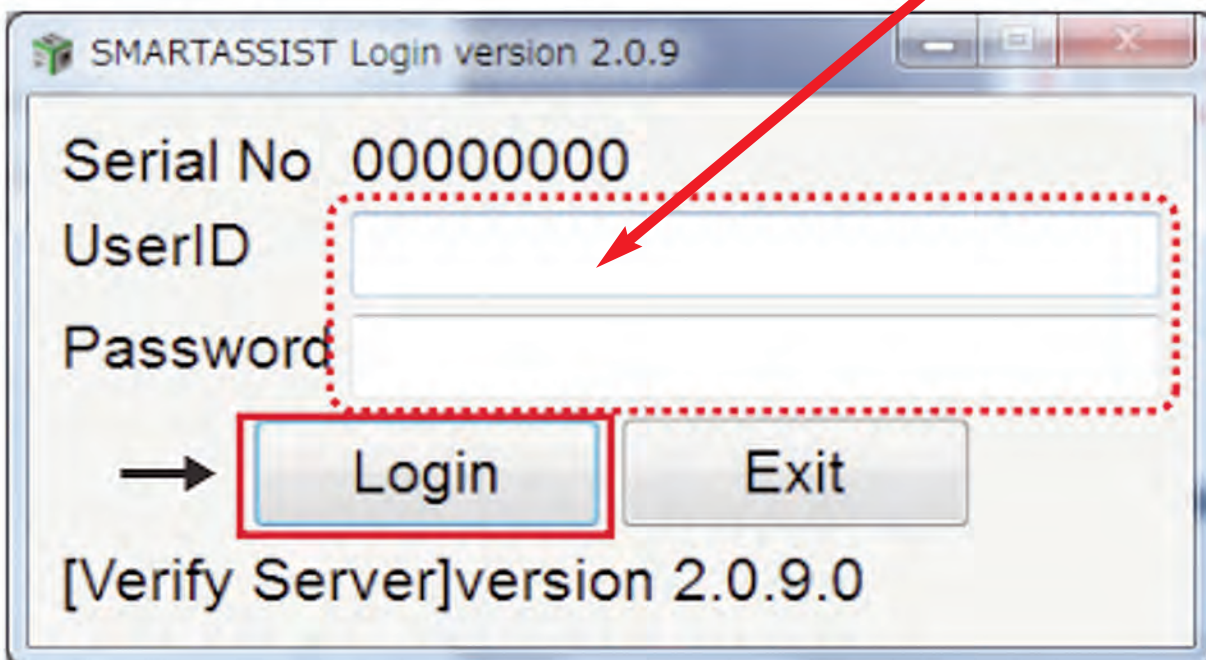
Double click the icon to launch the SmartAssist software.

HOW TO LOG IN TO THE SOFTWARE

Users to be Registered * Required for new applications for changes ☒ Click on the box and choose the condition

No.	Name(local language)	E-mail	YDS user ID
1	DEMO	Demo@anacorp.com	12334567
2			

License Key – adbf12e5e-79389718

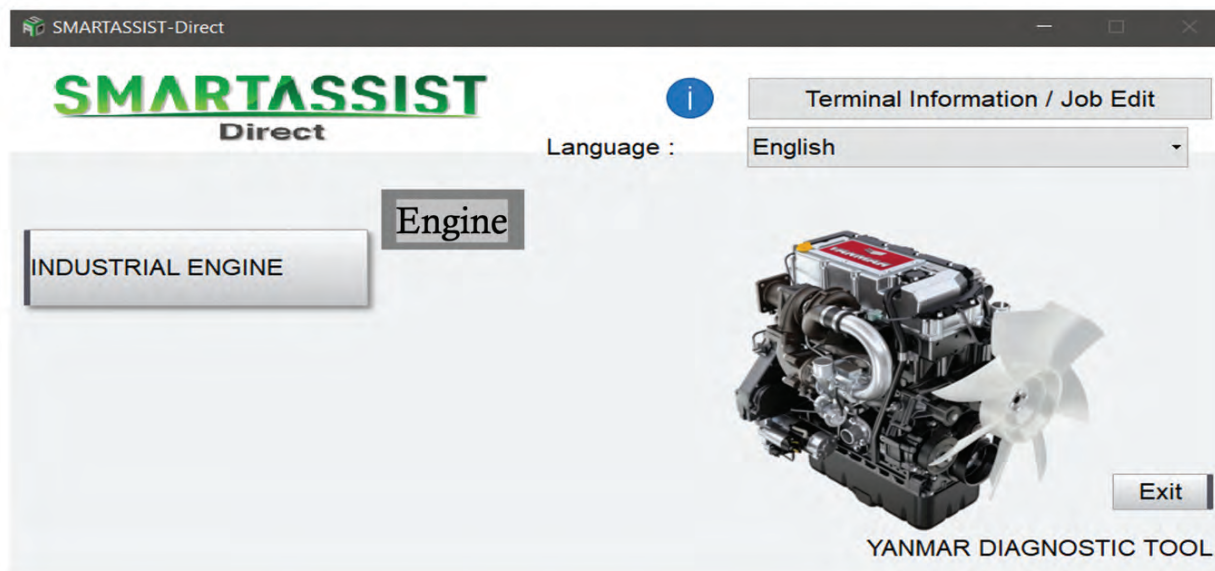


The image shows a screenshot of the SMARTASSIST Login version 2.0.9 window. The window has a title bar with the text 'SMARTASSIST Login version 2.0.9'. Inside the window, there are three input fields: 'Serial No' with the value '000000000', 'UserID', and 'Password'. A red dotted line connects the 'UserID' and 'Password' fields. Below the input fields, there are two buttons: 'Login' and 'Exit'. A red arrow points from the 'Login' button to the 'UserID' field. At the bottom of the window, it says '[Verify Server]version 2.0.9.0'.

After the software is launched, you will need to enter your UserID and Password.

Use the application form to aid in this step (See page 5).

HOW TO USE THE SOFTWARE

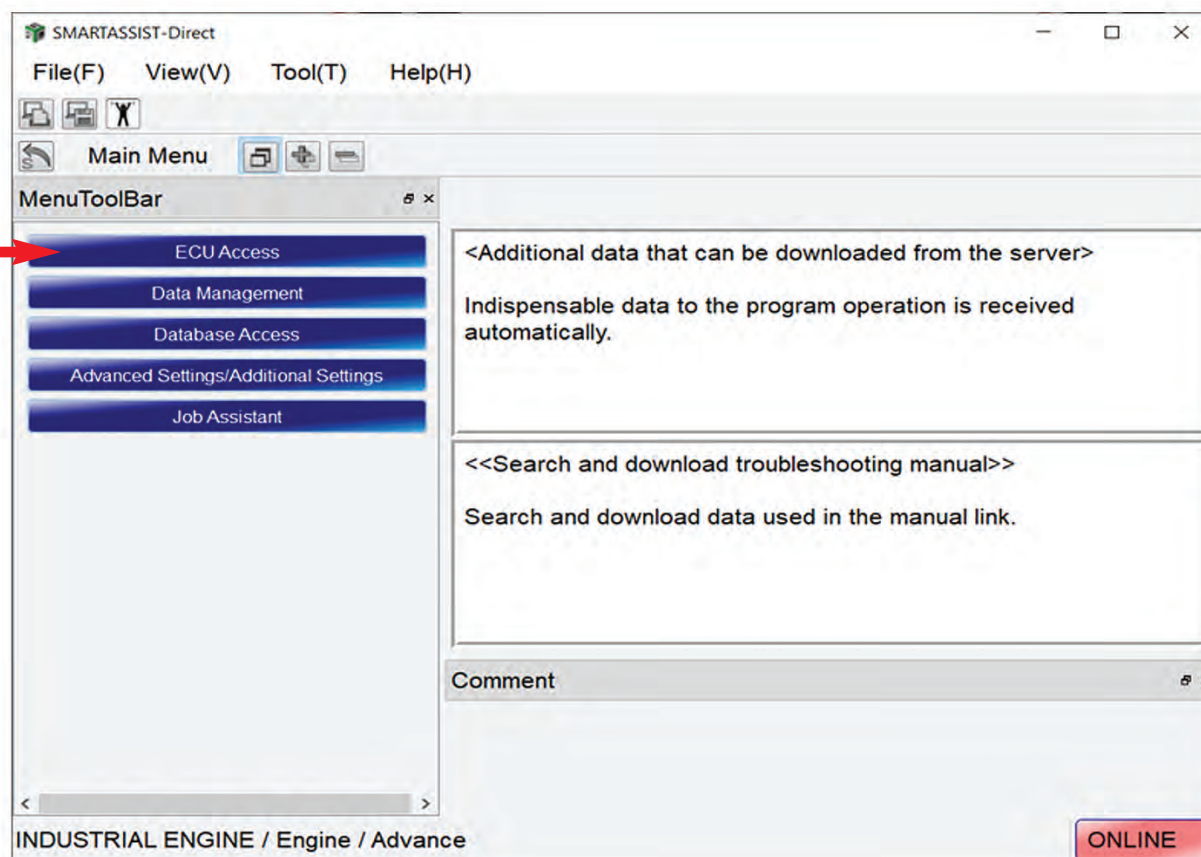


Basic Functions (Connecting to the ECU)

This is the Start Menu screen.

Click the **INDUSTRIAL ENGINE** tab
and then click the **ENGINE** subtab
to connect to the ECU.

HOW TO USE THE SOFTWARE

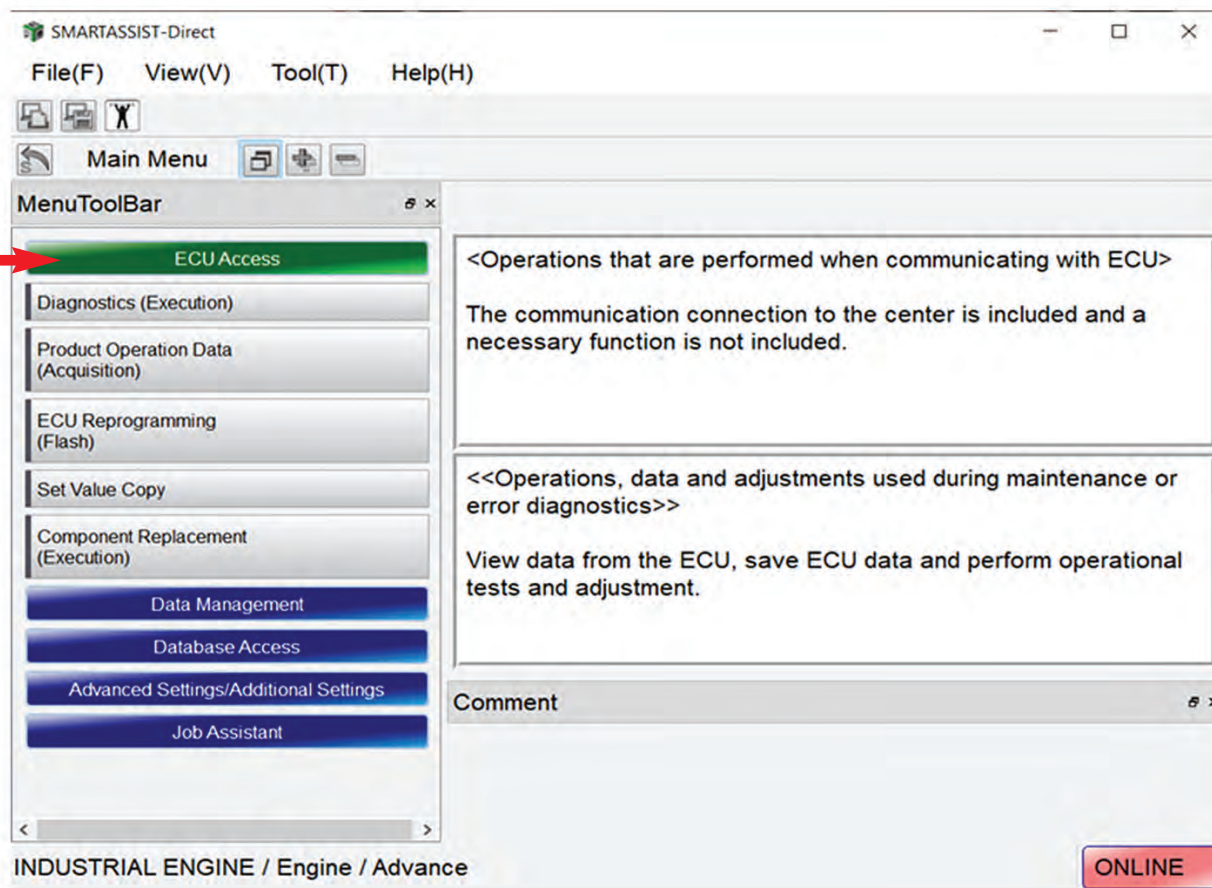


Basic Functions (Connecting to the ECU)

This is the Main Menu screen. Here you will find the main function tabs.

- You will want to click on the **ECU ACCESS** tab.

HOW TO USE THE SOFTWARE

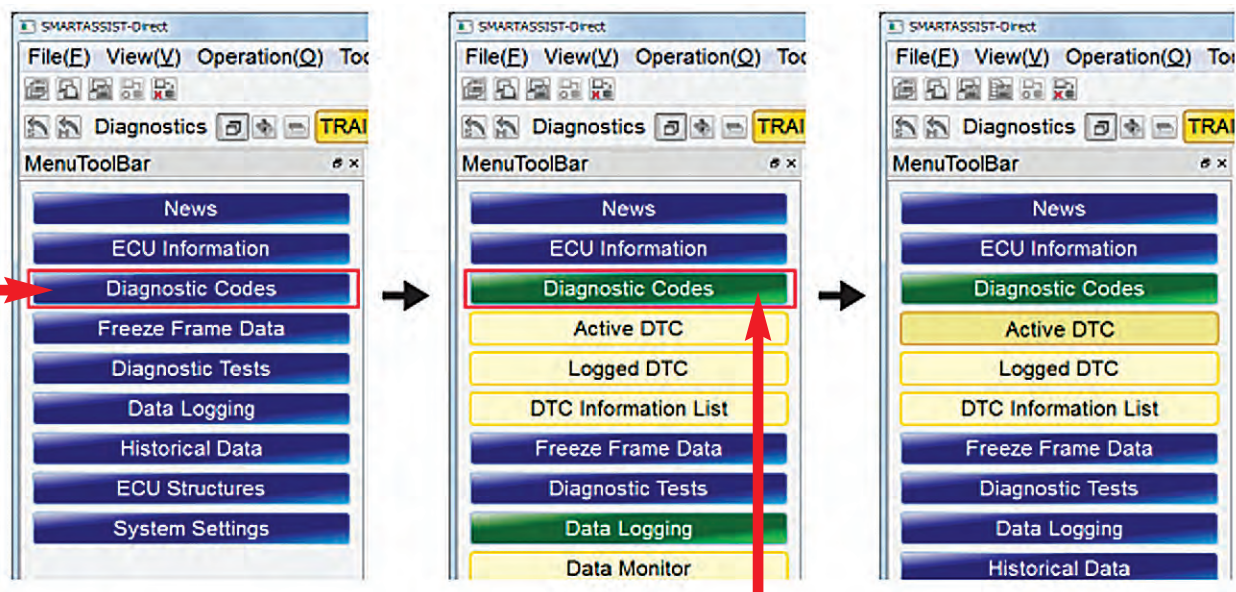


Basic Functions (Connecting to the ECU)

These are the ECU Access tabs.

- You will want to click on the **DIAGNOSTICS** tab.

HOW TO USE THE SOFTWARE



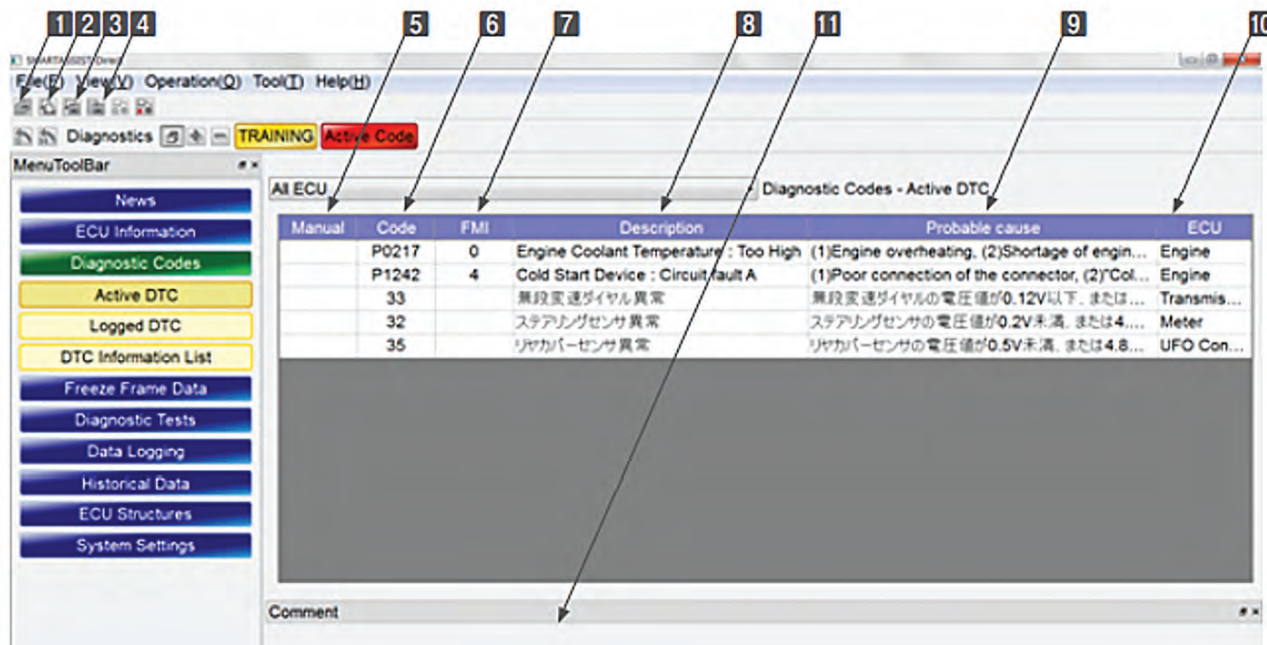
Basic Functions (Reading and Clearing Codes)

Clicking the menu button opens the submenu.





The selected item in the submenu will make the button appear dark.

By clicking it again, it closes.

HOW TO USE THE SOFTWARE



Operation Tool Bar

- 1  : Save the ECU's screen display data. (Refer to [7. Error Diagnostic Data Save and Display Functions].)
- 2  : Print the screen. (Refer to [6.2.2])
- 3  : Save a screenshot in BMP format. (Refer to [6.2.3])
- 4  : Save the screen data in CSV format. (Refer to [6.2.4])

Main Box

- 5 **Manual** : In entries that have this button **Display**, pressing it displays more detailed technical information.
- 6 **Code** : Display error codes (DTC) that conform to SAE J2012 or that have been specified for the product.
- 7 **FMI** : Display the error code. (Refer to [20. Attached Documents] on page 378.)
- 8 **Description** : Display the contents of the error code.
- 9 **Probable Cause** : Display the reason for the error determination.
- 10 **ECU** : Display the ECU of the faulty device. (Only if multiple ECU are connected.)

HOW TO USE THE SOFTWARE



● Function Buttons

6 **Clear Logged DTC** : Select data in the **Clear** box and delete it.

7 **All Clear** : Delete the complete defect history. Past data are deleted, but Current Defect will still be displayed.

● Main Box

8 **Clear** : Display the data selected for deletion. (Click to tick the checkbox.)

9 **Active** : Current defect are marked with a lamp symbol.

10 **Code** : Display error codes (DTC) that conform to SAE J2012 or that have been specified for the product.

11 **FMI** : Display the error mode. (Refer to [20. Attached Documents] on page 378.)

12 **Description** : Display the contents of the error code.

13 **OC** : Display the total number of occurrences for the same defect.

14 **First** : Display the time (machine operation) of the first occurrence.

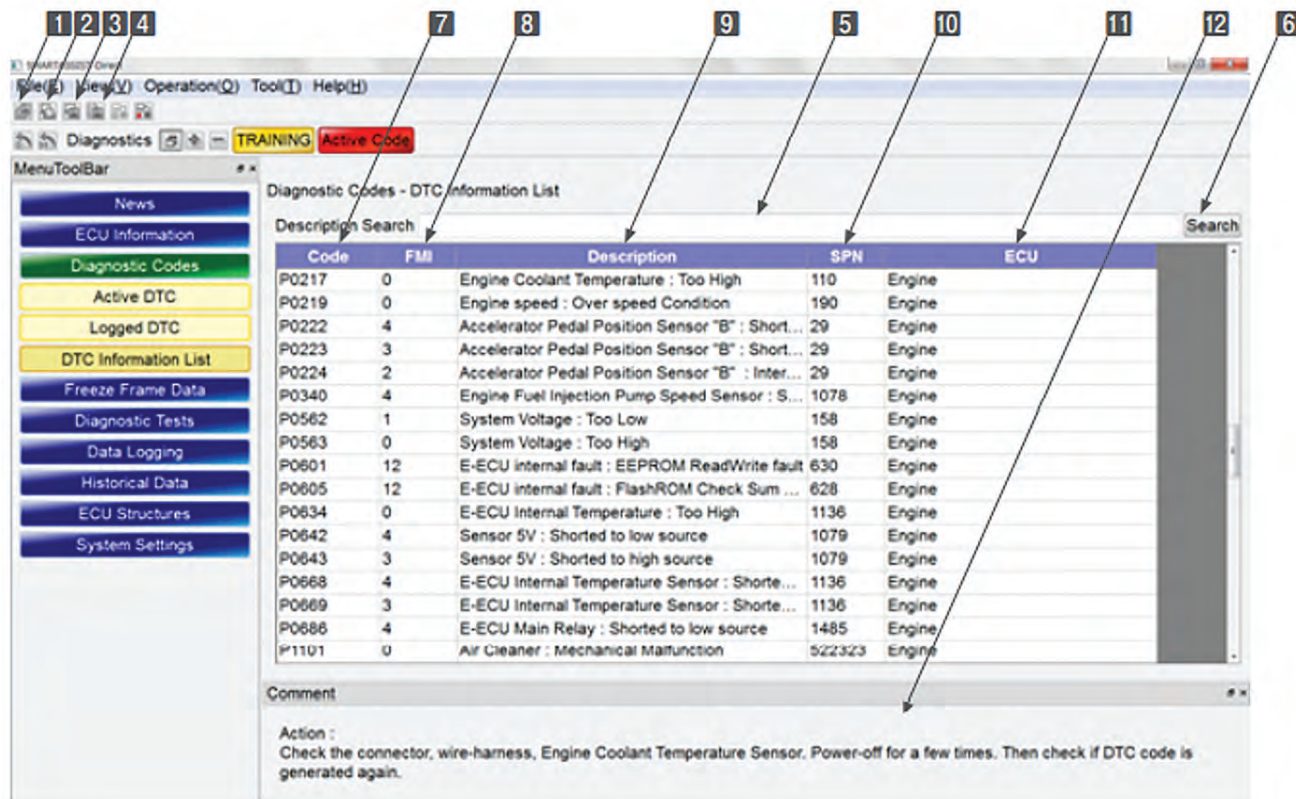
15 **Latest** : Display the time (machine operation) of the last occurrence.

16 **ECU** : Display the ECU of the faulty device. (Only if multiple ECU are connected.)

● Comment Box

17 **Comment box**: Display the reason for the error determination for the selected error (line colored in green).

HOW TO USE THE SOFTWARE



Function Buttons

5 **Description Search** : Enter the keyword for the search.

6 **Search** : Perform the search.

Main Box

7 **Code** : Display error codes (DTC) that conform to SAE J2012 or that have been specified for the product.

8 **FMI** : Display the error mode.

9 **Description** : Display the contents of the error code.

10 **SPN** : Display parameter ID numbers that comply to SAE J1939, and numbers for the sensors and actuators

11 **ECU** : Display the ECU that controls the devices. (Only if multiple ECU are connected.)

Note The displayed contents can vary by product.

Comment Box

12 **Comment box**: Display details of the error code for the selected line (colored in green).