



**EBOSS<sup>®</sup>**  
**220-125**  
 -HYBRID SYSTEM-  
**120/220** PRIME/PEAK  
**kVA** POWER

**20X**  
 UP TO 20X THE  
 CYCLE LIFE OF  
 NMC/LFP BATTERIES

SAFE BATTERY  
 TECHNOLOGY  
 NO THERMAL RUNAWAY

WIDEST  
 TEMPERATURE  
 OPERATING RANGE

**1Φ AND 3Φ**  
 SIMULTANEOUS  
 OUTPUT  
 VOLTAGES

REMOTE ACCESS  
 MONITORING &  
 TRACKING

INDUSTRIAL  
 GRADE  
 INVERTERS



**75 kWh**  
**ULTRA**  
**HIGH CYCLE**  
**LITHIUM**  
**TITANIUM**  
**OXIDE (LTO)**  
**BATTERY CHEMISTRY**

**PERFORMANCE //**

- 1 - 10" Touchscreen Control Panel
- 2 - Simul. Voltage Output Panel
- 3 - Emergency Stop Button
- 4 - Delta Demand Excitation™
- 5 - QuietTech™ Sound Attenuation
- 6 - Telematics Monitoring System

**MAINTENANCE //**

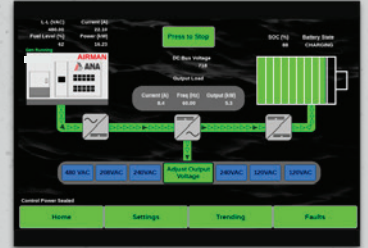
- 7 - Lift-off Door Hinges
- 8 - Ext. Fuel Tank Connections
- 9 - 110% Fluid Containment
- 10 - Service Extensions
- 11 - Fuel & Containment Drains
- 12 - Removable Trailer Fenders

**CONSTRUCTION //**

- 13 - Power-coated Steel Enclosure
- 14 - Stainless Steel Hardware
- 15 - Lockable Access Doors
- 16 - Automotive Door Seals
- 17 - 168 Gallon Fuel Tank
- 18 - Heavy-Duty Steel Trailer



**ISUZU® BR-4HK1X**  
 Tier 4 / CARB  
 Diesel Engine



1 | 10" Touchscreen Control Panel with color display



2 | Simultaneous Voltage Output Panel  
 120V - 20A x 2 | 480/208V 3Φ Cam-Locks™



6 | Telematics Monitoring System  
 Remote access and monitoring of fuel, runtime, GPS, load and more



8 | External Fuel Tank Connections with 3-Way Selection Valve

**IMPROVE FUEL ECONOMY // LOWER CARBON EMISSIONS // REDUCE NOISE LEVELS**  
**THE INDUSTRY'S HIGHEST-QUALITY HYBRID POWER SYSTEMS**

# HYBRID SYSTEM MODEL

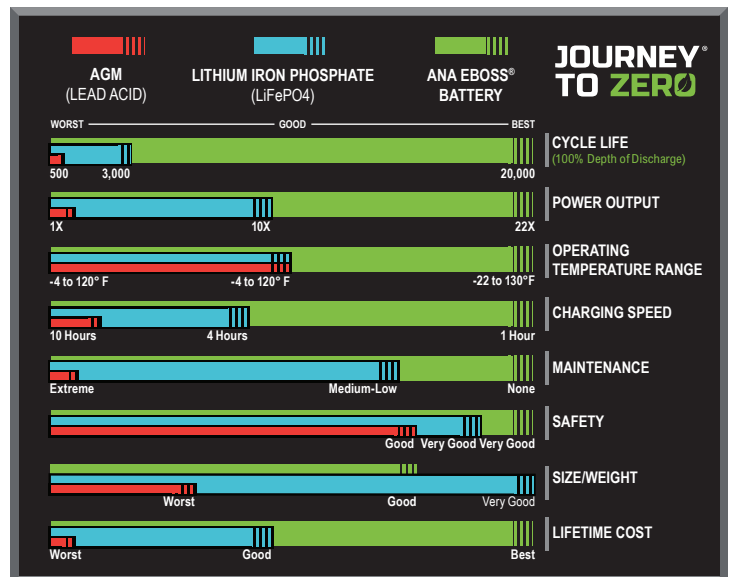
## EBOSS® 220-125



SPECIFICATIONS	EBOSS® 220-125
HYBRID ENERGY SYSTEM	ANA EBOSS®
<b>MAXIMUM INTERMITTENT POWER OUTPUT</b>	(Battery SOC Greater than 5%)
THREE-PHASE	220 kVA / 176 kW
SINGLE-PHASE	N/A / N/A
FREQUENCY	60 Hz
SIMULTANEOUS VOLTAGE	120V (1Φ) • 208/480 (3Φ)
VOLTAGE REGULATION	Adjustable
MAX. INTERMITTENT AMP-LOAD @208V	700 A
MAX. INTERMITTENT AMP-LOAD @480V	303 A
MOTOR START RATING - 3 SECOND @208V	1065 A
MOTOR START RATING - 3 SECOND @480V	461 A
<b>MAXIMUM CONTINUOUS POWER OUTPUT</b>	(Battery SOC greater than 0%)
GENERATOR	Airman SDG125
GENERATOR CHARGE RATE	125 kVA / 100 kW
THREE-PHASE OUTPUT	120 kVA / 96 kW
SINGLE-PHASE OUTPUT	2.4 kW x 2
SIMULTANEOUS VOLTAGE	120V (1Φ) • 208/480 (3Φ)
OPTIMAL CONTINUOUS LOAD	< 75 kW
MAX. CONTINUOUS AMP-LOAD @208V	328 A
MAX. CONTINUOUS AMP-LOAD @480V	150 A
<b>CONTROLS</b>	
CONTROL PANEL	10" Full Color Touch Screen
TELEMATICS	Generator & EBOSS®
ESG REPORTING	Yes
<b>TECHNOLOGY</b>	
BATTERY CHEMISTRY	Lithium Titanium Oxide (LTO)
BATTERY CAPACITY	75 kWh
TOTAL BATTERY LIFE OR ENERGY THROUGHOUT	6,000 MWh
CHARGE TIME (NO LOAD)	≈ 50 min
INVERTER OUTPUT MAX	176 kW
<b>BATTERY LIFE*</b>	
BATTERY TYPE	Lithium Titanium Oxide (LTO)
EST. CYCLE LIFE @ 77°F ENCLOSURE TEMPERATURES	90K Cycles at 90% DOD
EST. CYCLE LIFE @ 100°F ENCLOSURE TEMPERATURES	80K Cycles at 90% DOD
BATTERY LIFE (100°F @ 3 kW AVERAGE LOAD)	20 Years
<b>OPERATING TEMPERATURES</b>	
INVERTER COLD START TEMPERATURE (MINIMUM)	14°F
RUNNING OPERATING TEMPERATURE	-22°F to 130°F
ARCTIC PACKAGE OPERATING TEMP. (OPTIONAL)	-50°F to 130°F
<b>FEATURES &amp; OPTIONS</b>	
TRAILER MOUNT	Available
SKID MOUNT	Available
PARALLEL CAPABILITY	Available
COLD WEATHER/ARCTIC PACKAGES	Available

WEIGHTS & DIMENSIONS	
L x W x H (EBOSS® ONLY)	91" x 62" x 102"
EBOSS® WEIGHT ONLY	8,673 lbs
L x W x H (TRAILER AND GENERATOR)	255" x 84" x 106"
TOTAL WEIGHT (WITHOUT/WITH FUEL)	17,520 / 19,020 lbs
INTEGRAL FUEL TANK CAPACITY	168 gal
<b>GENERATOR COLD WEATHER OPTIONS</b>	
BLOCK HEATER   CCV HEATER	Available
FUEL FILTER HEATER   FUEL TANK HEATER	Available
BATTERY BLANKET	Available
<b>ENERGY BOSS COLD WEATHER OPTIONS</b>	
Enclosure Heater	Available
Magnetic Ventilation Covers	Available
<b>WARRANTY</b>	
EBOSS® ONLY	2 Years
EBOSS® WITH TRAILER & GENERATOR	2 Years, 2000 Hours
MANUFACTURER BATTERY WARRANTY	7 Years
SERVICE & SUPPORT	24/7, 365 Days
TRAINING	Henderson, NV or On Location

### HOW THE ANA EBOSS® BATTERY COMPARES



\*Battery expected to retain 95% of its life after 7 years under 24/7 operation at 10% average load.

All specifications are subject to change without prior notice. Contact ANA Inc. for the most current information.

### ANA EBOSS® HYBRID ENERGY SYSTEMS BENEFITS

- Increased Fuel Efficiency
- Reduced Green House Gas Emissions
- Cost Effective High ROI
- Minimize Noise / Maximize Quiet Time
- Eliminate Maintenance Needs and Operational Hours by up to 75%
- Remote Access and Monitoring

SOLD AND SERVICED BY

**ANA Nevada**

1740 Raiders Way  
Henderson, NV 89052

**ANA S. California**

11100 Hope Street  
Cypress, CA 90630

**ANA N. California**

1315 Vinci Avenue  
Sacramento, CA 95838

**ANA South Carolina**

1335 Hayne Street  
Spartanburg, SC 29301



**ANA, Inc.**  
Executive Office

1770 Raiders Way, Henderson, NV 89052

**ANACORP.COM**

(562) 450-3570 // sales@anacorp.com



**ANA**

We make your world easier.