



EBOSS™
220kVA
 -POWER MODULE-

120/220 PRIME/PEAK
kVA POWER

20X

UP TO 20X THE
 CYCLE LIFE OF
 NMC/LFP BATTERIES



SAFE BATTERY
 TECHNOLOGY
 NO THERMAL RUNAWAY



WIDEST
 TEMPERATURE
 OPERATING RANGE

1Φ AND 3Φ

SIMULTANEOUS
 OUTPUT
 VOLTAGES



REMOTE ACCESS
 MONITORING &
 TRACKING



INDUSTRIAL
 GRADE
 INVERTERS



**75 kWh ULTRA
 HIGH CYCLE**
 LITHIUM TITANATE OXIDE (LTO)
 BATTERY CHEMISTRY

PERFORMANCE //

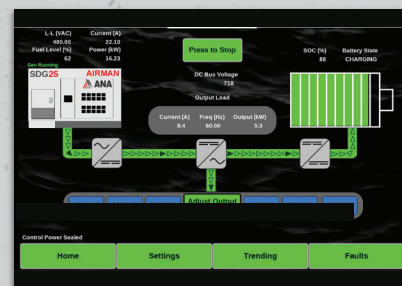
- 1 - 10" Touchscreen Control Panel
- 2 - CAM-Lok™ Input Connection
- 3 - Emergency Stop Button
- 4 - Telematics Monitoring System
- 5 - Simul. Voltage Output Panel

CONSTRUCTION //

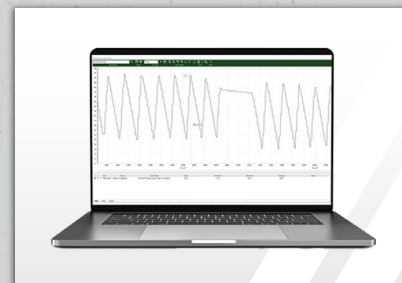
- 6 - Powder-coated Steel Enclosure
- 7 - Stainless Steel Hardware
- 8 - Lockable Access Doors
- 9 - Heavy-Duty Steel Trailer

MAINTENANCE //

- 10 - Service Extensions
- 11 - Removable Trailer Fenders



1 | 10" Touchscreen Control Panel
 with color display



4 | Telematics Monitoring System



5 | Simultaneous Voltage Output Panel
 120V - 20A x 2 | 480/208V 3Φ Cam-Loks™

IMPROVE FUEL ECONOMY // LOWER CARBON EMISSIONS // REDUCE NOISE LEVELS
THE INDUSTRY'S HIGHEST-QUALITY HYBRID POWER SYSTEMS

POWER MODULE MODEL

EBOSS™ 220 kVA



SPECIFICATIONS	EBOSS™ 220 kVA Power Module
HYBRID ENERGY SYSTEM	ANA EBOSS™
MAXIMUM INTERMITTENT POWER OUTPUT	(Battery SOC Greater than 5%)
THREE-PHASE	220 kVA / 176 kW
SINGLE-PHASE	N/A / N/A
FREQUENCY	60 Hz
SIMULTANEOUS VOLTAGE	120V (1Φ) • 208/480 (3Φ)
VOLTAGE REGULATION	Adjustable
MAX. INTERMITTENT AMP-LOAD @208V	700 A
MAX. INTERMITTENT AMP-LOAD @480V	303 A
MOTOR START RATING - 3 SECOND @208V	1065 A
MOTOR START RATING - 3 SECOND @480V	461 A
MAXIMUM CONTINUOUS POWER OUTPUT	(Battery SOC greater than 0%)
THREE-PHASE OUTPUT	120 kVA / 96 kW
SINGLE-PHASE OUTPUT	2.4 kW x 2
SIMULTANEOUS VOLTAGE	120V (1Φ) • 208/480 (3Φ)
OPTIMAL CONTINUOUS LOAD	< 75 kW
MAX. CONTINUOUS AMP-LOAD @208V	328 A
MAX. CONTINUOUS AMP-LOAD @480V	150 A
CONTROLS	
CONTROL PANEL	10" Full Color Touch Screen
TELEMATICS	EBOSS™
ESG REPORTING	Yes
TECHNOLOGY	
BATTERY CHEMISTRY	Lithium Titanate Oxide (LTO)
BATTERY CAPACITY	75 kWh
TOTAL BATTERY LIFE OR ENERGY THROUGHOUT	6,000 MWh
CHARGE TIME (NO LOAD)	≈ 50 min
INVERTER OUTPUT MAX	176 kW
BATTERY LIFE*	
BATTERY TYPE	Lithium Titanate Oxide (LTO)
EST. CYCLE LIFE @ 77°F ENCLOSURE TEMPERATURES	90K Cycles at 90% DOD
EST. CYCLE LIFE @ 100°F ENCLOSURE TEMPERATURES	80K Cycles at 90% DOD
BATTERY LIFE (100°F @ 3 kW AVERAGE LOAD)	20 Years
OPERATING TEMPERATURES	
INVERTER COLD START TEMPERATURE (MINIMUM)	14°F
RUNNING OPERATING TEMPERATURE	-22°F to 130°F
ARCTIC PACKAGE OPERATING TEMP. (OPTIONAL)	-50°F to 130°F
FEATURES & OPTIONS	
TRAILER MOUNT	Available
SKID MOUNT	Available
PARALLEL CAPABILITY	Available
COLD WEATHER/ARCTIC PACKAGES	Available

*Battery expected to retain 95% of its life after 7 years under 24/7 operation at 3kW average load.

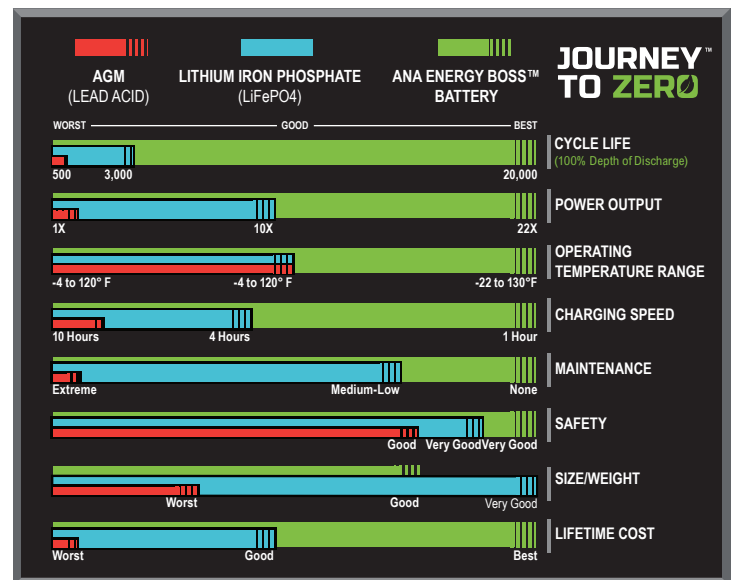
*Battery expected to retain 95% of its life after 7 years under 24/7 operation at 3kW average load.

All specifications are subject to change without prior notice. Contact ANA Inc. for the most current information.

WEIGHTS & DIMENSIONS	
L x W x H	≈ 73.5" x 61" x 104.5"
EBOSS WEIGHT	11,130 lbs
EBOSS™ COLD WEATHER OPTIONS	
Enclosure Heater	Available
Magnetic Ventilation Covers	Available
WARRANTY	
EBOSS™ ONLY	2 Years
MANUFACTURER BATTERY WARRANTY	7 Years
SERVICE & SUPPORT	24/7, 365 Days
TRAINING	Henderson, NV or On Location

Skid Mount Version Also Available!
Ask your sales rep about all possible configurations.

HOW THE ANA ENERGY BOSS™ BATTERY COMPARES



ANA ENERGY BOSS™ HYBRID ENERGY SYSTEMS BENEFITS

- Increased Fuel Efficiency
- Reduced Green House Gas Emissions
- Cost Effective High ROI
- Minimize Noise / Maximize Quiet Time
- Eliminate Maintenance Needs and Operational Hours by up to 75%
- Remote Access and Monitoring

SOLD AND SERVICED BY

ANA Nevada

1740 Raiders Way
Henderson, NV 89052

ANA S. California

11100 Hope Street
Cypress, CA 90630

ANA N. California

1315 Vinci Avenue
Sacramento, CA 95838

ANA South Carolina

1335 Hayne Street
Spartanburg, SC 29301



ANA, Inc.
Executive Office

1770 Raiders Way, Henderson, NV 89052

ANACORP.COM

(562) 450-3570 // sales@anacorp.com



ANA®

We make your world easier.