



EBOSS[®] 25-25 -HYBRID SYSTEM-

**23/30
kVA PRIME/PEAK
POWER**

20X
UP TO 20X THE
CYCLE LIFE OF
NMC/LFP BATTERIES

**SAFE BATTERY
TECHNOLOGY
NO THERMAL RUNAWAY**

**WIDEST
TEMPERATURE
OPERATING RANGE**

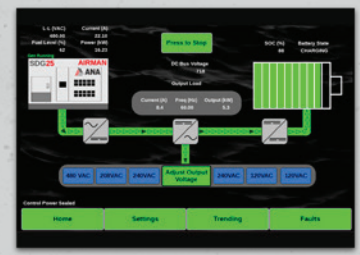
**1Φ AND 3Φ
SIMULTANEOUS
OUTPUT
VOLTAGES**

**REMOTE ACCESS
MONITORING &
TRACKING**

**INDUSTRIAL
GRADE
INVERTERS**



**15 kWh
ULTRA
HIGH CYCLE
LITHIUM
TITANIUM
OXIDE (LTO)
BATTERY CHEMISTRY**



1 | 10" Touchscreen Control Panel with color display



**2 | Simultaneous Voltage Output Panel
120V - 20A x 1 | 240V - 50A x 1
1Φ 240V & 3Φ 208/480v Cam-Loks™**



**5 | Telematics Monitoring System
Remote access and monitoring of fuel,
runtime, GPS, load and more**



**7 | External Fuel Tank Connections
with 3-Way Selection Valve**

PERFORMANCE //

- 1 - 10" Touchscreen Control Panel
- 2 - Simul. Voltage Output Panel
- 3 - Emergency Stop Button
- 4 - QuietTech™ Sound Attenuation
- 5 - Telematics Monitoring System

MAINTENANCE //

- 6 - Lift-off Door Hinges
- 7 - Ext. Fuel Tank Connections
- 8 - 110% Fluid Containment
- 9 - Service Extensions
- 10 - Fuel & Containment Drains
- 11 - Removable Trailer Fenders

CONSTRUCTION //

- 12 - Power-coated Steel Enclosure
- 13 - Stainless Steel Hardware
- 14 - Lockable Access Doors
- 15 - Automotive Door Seals
- 16 - 51.5 Gallon Fuel Tank
- 17 - Heavy-Duty Steel Trailer



ISUZU 4LE2T
Tier 4 / CARB
Diesel Engine



IMPROVE FUEL ECONOMY // LOWER CARBON EMISSIONS // REDUCE NOISE LEVELS
THE INDUSTRY'S HIGHEST-QUALITY HYBRID POWER SYSTEMS

HYBRID SYSTEM MODEL

EBOSS® 25-25



SPECIFICATIONS	EBOSS® 25-25
HYBRID ENERGY SYSTEM	ANA EBOSS®
MAXIMUM INTERMITTENT POWER OUTPUT	(Battery SOC Greater than 5%)
THREE-PHASE	30 kVA / 24 kW
SINGLE-PHASE	20 kVA / 16 kW
FREQUENCY	60 Hz
SIMULTANEOUS VOLTAGE	120/240 (1Ø) • 208/480 (3Ø)
VOLTAGE REGULATION	Adjustable
MAX. INTERMITTENT AMP-LOAD @208V	70 A
MAX. INTERMITTENT AMP-LOAD @480V	30 A
MOTOR START RATING - 3 SECOND @208V	104 A
MOTOR START RATING - 3 SECOND @480V	45 A
MAXIMUM CONTINUOUS POWER OUTPUT	(Battery SOC greater than 0%)
GENERATOR	AIRMAN® SDG25
GENERATOR CHARGE RATE	25 kVA / 20 kW
THREE-PHASE OUTPUT	23 kVA / 19 kW
SINGLE-PHASE OUTPUT	20 kVA / 16 kW
SIMULTANEOUS VOLTAGE	120/240 (1Ø) • 208/480 (3Ø)
MAX. CONTINUOUS AMP-LOAD @208V	70 A
MAX. CONTINUOUS AMP-LOAD @480V	30 A
CONTROLS	
CONTROL PANEL	10" Full Color Touch Screen
TELEMATICS	Generator & EBOSS®
ESG REPORTING	Yes
TECHNOLOGY	
BATTERY CHEMISTRY	Lithium Titanium Oxide (LTO)
BATTERY CAPACITY	15 kWh
TOTAL BATTERY LIFE OR ENERGY THROUGHOUT	1,200 MWh
CHARGE TIME (NO LOAD)	< 45 min
INVERTER OUTPUT MAX	24 kW
BATTERY LIFE*	
BATTERY TYPE	Lithium Titanium Oxide (LTO)
EST. CYCLE LIFE @ 77°F ENCLOSURE TEMPERATURES	90K Cycles at 90% DOD
EST. CYCLE LIFE @ 100°F ENCLOSURE TEMPERATURES	80K Cycles at 90% DOD
BATTERY LIFE (100°F @ 3 kW AVERAGE LOAD)	41 Years
OPERATING TEMPERATURES	
INVERTER COLD START TEMPERATURE (MINIMUM)	14°F
RUNNING OPERATING TEMPERATURE	-22°F to 130°F
ARCTIC PACKAGE OPERATING TEMP. (OPTIONAL)	-50°F to 130°F
FEATURES & OPTIONS	
TRAILER MOUNT	Available
SKID MOUNT	Available
ROOF MOUNTED SOLAR FOR EBOSS BATTERY, 3 PANELS (1.6 kW)	Available
PARALLEL CAPABILITY	Available
COLD WEATHER/ARCTIC PACKAGES	Available

WEIGHTS & DIMENSIONS	
L x W x H x (EBOSS ONLY)	40" x 48" x 46"
EBOSS WEIGHT ONLY	2,120 lbs
L x W x H (TRAILER AND GENERATOR)	160" x 74" x 75"
TOTAL WEIGHT (WITHOUT/WITH FUEL)	5100 / 5500 lbs
INTEGRAL FUEL TANK CAPACITY	51.5 gal
GENERATOR COLD WEATHER OPTIONS	
BLOCK HEATER CCV HEATER	Available Now
FUEL FILTER HEATER FUEL TANK HEATER	Available Now
BATTERY BLANKET	Available Now
ENERGY BOSS COLD WEATHER OPTIONS	
ENCLOSURE HEATER	Available Now
MAGNETIC VENTILATION COVERS	Available Now
WARRANTY	
EBOSS ONLY	2 Years
EBOSS WITH TRAILER & GENERATOR	2 Years, 2000 Hours
MANUFACTURER BATTERY WARRANTY	7 Years
SERVICE & SUPPORT	24/7, 365 Days
TRAINING	Henderson, NV or On Location

*Battery expected to retain 95% of its life after 7 years under 24/7 operation at 3kW average load.

EBOSS® Solar 1.6

Solar Power to help charge your EBOSS Battery System during the day



- Utility Scale Mono Bifacial Solar Modules
- High Powered 3-Phase Quad Microinverter
- UL1741/ CSA C22.2 No. 107.1-16/ UL1741SA/ UL1741SB/ IEEE1547
 - Integrated Safety Protection
 - 96.5% Peak Efficiency
- Custom Solar Drawer with Locking Mechanism
 - IRA Compliant

All specifications are subject to change without prior notice. Contact ANA Inc. for the most current information.

ANA EBOSS HYBRID ENERGY SYSTEMS BENEFITS

- Increased Fuel Efficiency
- Cost Effective High ROI
- Eliminate Maintenance Needs and Operational Hours by up to 75%
- Reduced Green House Gas Emissions
- Minimize Noise / Maximize Quiet Time
- Remote Access and Monitoring

SOLD AND SERVICED BY

ANA
Nevada

1740 Raiders Way
Henderson, NV 89052

ANA
S. California

11100 Hope Street
Cypress, CA 90630

ANA
N. California

1315 Vinci Avenue
Sacramento, CA 95838

ANA
South Carolina

1335 Hayne Street
Spartanburg, SC 29301



ANA, Inc.
Executive Office

1770 Raiders Way, Henderson, NV 89052

ANACORP.COM

(562) 450-3570 // sales@anacorp.com



ANA

We make your world easier.