



**20X**

UP TO 20X THE  
CYCLE LIFE OF  
NMC/LFP BATTERIES



SAFE BATTERY  
TECHNOLOGY  
NO THERMAL RUNAWAY



WIDEST  
TEMPERATURE  
OPERATING RANGE



SIMULTANEOUS  
OUTPUT  
VOLTAGES



REMOTE ACCESS  
MONITORING &  
TRACKING



INDUSTRIAL  
GRADE  
INVERTERS



**15 kWh**  
**ULTRA**  
**HIGH CYCLE**  
**LITHIUM**  
**TITANATE**  
**OXIDE (LTO)**  
**BATTERY CHEMISTRY**

PATENTS PENDING

#### PERFORMANCE //

- 1 - 10" Touchscreen Control Panel
- 2 - Simul. Voltage Output Panel
- 3 - Emergency Stop Button
- 4 - Delta Demand Excitation™
- 5 - QuietTech™ Sound Attenuation
- 6 - Telematics Monitoring System

#### MAINTENANCE //

- 7 - Lift-off Door Hinges
- 8 - Ext. Fuel Tank Connections
- 9 - 110% Fluid Containment
- 10 - Service Extensions
- 11 - Fuel & Containment Drains
- 12 - Removable Trailer Fenders

#### CONSTRUCTION //

- 13 - Power-coated Steel Enclosure
- 14 - Stainless Steel Hardware
- 15 - Lockable Access Doors
- 16 - Automotive Door Seals
- 17 - 51.5 Gallon Fuel Tank
- 18 - Heavy-Duty Steel Trailer



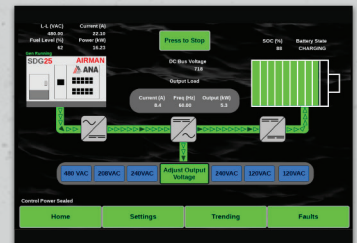
**ISUZU 4LE2T**  
Tier 4 / CARB  
Diesel Engine



**EBOSS™**  
**25kVA**  
- HYBRID SYSTEM -

**23/30**  
**kVA**

**PRIME/PEAK**  
**POWER**



**1 | 10" Touchscreen Control Panel**  
with color display



**2 | Simultaneous Voltage Output Panel**  
120V - 20A x 1 | 240V - 50A x 1  
1Φ 240V & 3Φ 208/480v Cam-Loks™



**6 | Telematics Monitoring System**  
Remote access and monitoring of fuel,  
runtime, GPS, load and more



**8 | External Fuel Tank Connections**  
with 3-Way Selection Valve

**IMPROVE FUEL ECONOMY // LOWER CARBON EMISSIONS // REDUCE NOISE LEVELS**  
**THE INDUSTRY'S HIGHEST-QUALITY HYBRID POWER SYSTEMS**

# HYBRID SYSTEM MODEL EBOSS™ 25kVA



SPECIFICATIONS	EBOSS™ 25kVA
HYBRID ENERGY SYSTEM	ANA EBOSS™
<b>MAXIMUM INTERMITTENT POWER OUTPUT</b>	(Battery SOC Greater than 5%)
THREE-PHASE	30 kVA / 24 kW
SINGLE-PHASE	20 kVA / 16 kW
FREQUENCY	60 Hz
SIMULTANEOUS VOLTAGE	120/240 (1Φ) • 208/480 (3Φ)
VOLTAGE REGULATION	Adjustable
MAX. INTERMITTENT AMP-LOAD @208V	70 A
MAX. INTERMITTENT AMP-LOAD @480V	30 A
MOTOR START RATING - 3 SECOND @208V	104 A
MOTOR START RATING - 3 SECOND @480V	45 A
<b>MAXIMUM CONTINUOUS POWER OUTPUT</b>	(Battery SOC greater than 0%)
GENERATOR	Airman SDG25
GENERATOR CHARGE RATE	25 kVA / 20 kW
THREE-PHASE OUTPUT	23 kVA / 19 kW
SINGLE-PHASE OUTPUT	20 kVA / 16 kW
SIMULTANEOUS VOLTAGE	120/240 (1Φ) • 208/480 (3Φ)
MAX. CONTINUOUS AMP-LOAD @208V	70 A
MAX. CONTINUOUS AMP-LOAD @480V	30 A
<b>CONTROLS</b>	
CONTROL PANEL	10" Full Color Touch Screen
TELEMATICS	Generator & Energy Boss™
ESG REPORTING	Yes
<b>TECHNOLOGY</b>	
BATTERY CHEMISTRY	Lithium Titanate Oxide (LTO)
BATTERY CAPACITY	15 kWh
TOTAL BATTERY LIFE OR ENERGY THROUGHOUT	1,200 MWh
CHARGE TIME (NO LOAD)	< 45 min
INVERTER OUTPUT MAX	24 kW
<b>BATTERY LIFE*</b>	
BATTERY TYPE	Lithium Titanate Oxide (LTO)
EST. CYCLE LIFE @ 77°F ENCLOSURE TEMPERATURES	90K Cycles at 90% DOD
EST. CYCLE LIFE @ 100°F ENCLOSURE TEMPERATURES	80K Cycles at 90% DOD
BATTERY LIFE (100°F @ 3 kW AVERAGE LOAD)	41 Years
<b>OPERATING TEMPERATURES</b>	
INVERTER COLD START TEMPERATURE (MINIMUM)	14°F
RUNNING OPERATING TEMPERATURE	-22°F to 130°F
ARCTIC PACKAGE OPERATING TEMP. (OPTIONAL)	-50°F to 130°F
<b>FEATURES &amp; OPTIONS</b>	
TRAILER MOUNT	Available
SKID MOUNT	Available
ROOF MOUNTED SOLAR FOR EBOSS BATTERY, 3 PANELS (1.6 kW)	Available
PARALLEL CAPABILITY	Available
COLD WEATHER/ARCTIC PACKAGES	Available

WEIGHTS & DIMENSIONS	
L x W x H (EBOSS ONLY)	40" x 48" x 46"
EBOSS WEIGHT ONLY	2,120 lbs
L x W x H (TRAILER AND GENERATOR)	160" x 74" x 75"
TOTAL WEIGHT (WITHOUT/WITH FUEL)	5100 / 5500 lbs
INTEGRAL FUEL TANK CAPACITY	51.5 gal
<b>GENERATOR COLD WEATHER OPTIONS</b>	
BLOCK HEATER   CCV HEATER	Available Now
FUEL FILTER HEATER   FUEL TANK HEATER	Available Now
BATTERY BLANKET	Available Now
<b>ENERGY BOSS COLD WEATHER OPTIONS</b>	
Enclosure Heater	Available Now
Magnetic Ventilation Covers	Available Now
<b>WARRANTY</b>	
ENERGY BOSS™ ONLY	2 Years
ENERGY BOSS™ WITH TRAILER & GENERATOR	2 Years, 2000 Hours
MANUFACTURER BATTERY WARRANTY	7 Years
SERVICE & SUPPORT	24/7, 365 Days
TRAINING	Henderson, NV or On Location

\*Battery expected to retain 95% of its life after 7 years under 24/7 operation at 3kW average load.

## Energy Boss Solar 1.6

Solar Power to help charge your  
Energy Boss Battery System during the day



- Utility Scale Mono Bifacial Solar Modules
- High Powered 3-Phase Quad Microinverter
- UL1741/ CSA C22.2 No. 107.1-16/ UL1741SA/ UL1741SB/ IEEE1547
  - Integrated Safety Protection
  - 96.5% Peak Efficiency
- Custom Solar Drawer with Locking Mechanism
  - IRA Compliant

All specifications are subject to change without prior notice. Contact ANA Inc. for the most current information.

## ANA ENERGY BOSS™ HYBRID ENERGY SYSTEMS BENEFITS

- Increased Fuel Efficiency
- Reduced Green House Gas Emissions
- Cost Effective High ROI
- Minimize Noise / Maximize Quiet Time
- Eliminate Maintenance Needs and Operational Hours by up to 75%
- Remote Access and Monitoring

SOLD AND SERVICED BY

**ANA**  
**Nevada**

1740 Raiders Way  
Henderson, NV 89052

**ANA**  
**S. California**

11100 Hope Street  
Cypress, CA 90630

**ANA**  
**N. California**

1315 Vinci Avenue  
Sacramento, CA 95838

**ANA**  
**South Carolina**

1335 Hayne Street  
Spartanburg, SC 29301



**ANA, Inc.**  
*Executive Office*

1770 Raiders Way, Henderson, NV 89052

**ANACORP.COM**

(562) 450-3570 // sales@anacorp.com



**ANA®**

We make your world easier.