



EBOSS™
400kVA
 -HYBRID SYSTEM-
210/400 kVA PRIME/PEAK
POWER

20X
 UP TO 20X THE
 CYCLE LIFE OF
 NMC/LFP BATTERIES


 SAFE BATTERY
 TECHNOLOGY
 NO THERMAL RUNAWAY

 130°F
 -22°F
 WIDEST
 TEMPERATURE
 OPERATING RANGE

480V
3Φ
 480V 3-PHASE
 OUTPUT


 REMOTE ACCESS
 MONITORING &
 TRACKING


 INDUSTRIAL
 GRADE
 INVERTERS



125 kWh
ULTRA
HIGH CYCLE
LITHIUM
TITANIUM
OXIDE (LTO)
BATTERY CHEMISTRY



JOHN DEERE-6068
 Tier 4 / CARB
 Diesel Engine

PERFORMANCE //

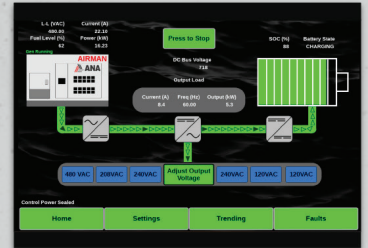
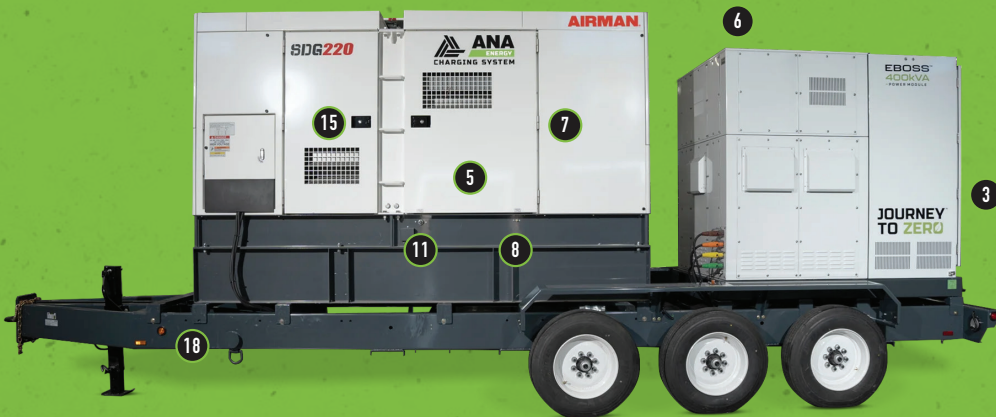
- 1 - 10" Touchscreen Control Panel
- 2 - 480V 3-Phase Output Panel
- 3 - Emergency Stop Button
- 4 - Delta Demand Excitation™
- 5 - QuietTech™ Sound Attenuation
- 6 - Telematics Monitoring System

MAINTENANCE //

- 7 - Lift-off Door Hinges
- 8 - Ext. Fuel Tank Connections
- 9 - 110% Fluid Containment
- 10 - Service Extensions
- 11 - Fuel & Containment Drains
- 12 - Removable Trailer Fenders

CONSTRUCTION //

- 13 - Power-coated Steel Enclosure
- 14 - Stainless Steel Hardware
- 15 - Lockable Access Doors
- 16 - Automotive Door Seals
- 17 - 285 Gallon Fuel Tank
- 18 - Heavy-Duty Steel Trailer



1 | 10" Touchscreen Control Panel with color display



2 | 480V 3-Phase Output Panel
 120V - Courtesy Outlets | 480V 3Φ Cam-Loks™



6 | Telematics Monitoring System
 Remote access and monitoring of fuel, runtime, GPS, load and more



8 | External Fuel Tank Connections with 3-Way Selection Valve

IMPROVE FUEL ECONOMY // LOWER CARBON EMISSIONS // REDUCE NOISE LEVELS
THE INDUSTRY'S HIGHEST-QUALITY HYBRID POWER SYSTEMS

HYBRID SYSTEM MODEL

EBOSS™ 400 kVA

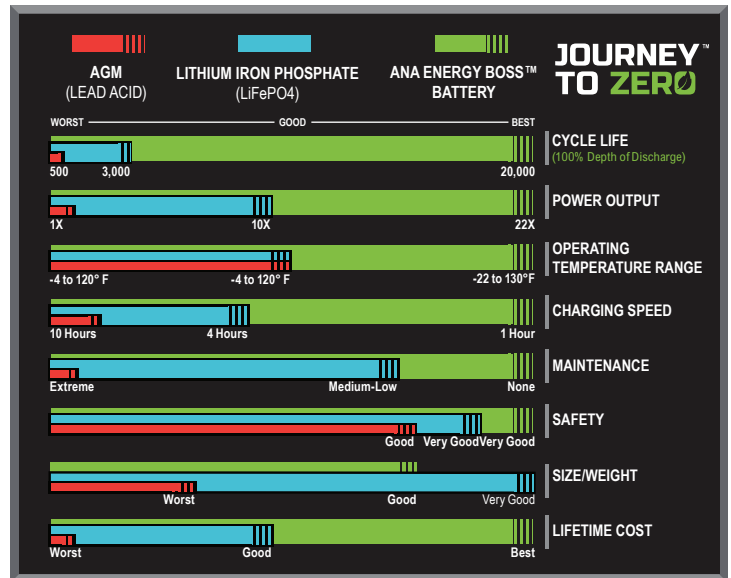


SPECIFICATIONS	EBOSS™ 400kVA
HYBRID ENERGY SYSTEM	ANA EBOSS™
MAXIMUM INTERMITTENT POWER OUTPUT	(Battery SOC Greater than 5%)
THREE-PHASE	400 kVA / 320 kW
SINGLE-PHASE	N/A
FREQUENCY	60 Hz
VOLTAGE	120V (Courtesy Outlets) • 480 (3Φ)
VOLTAGE REGULATION	Adjustable
MAX. INTERMITTENT AMP-LOAD @480V	481 A
MOTOR START RATING - 3 SECOND @480V	769 A
MAXIMUM CONTINUOUS POWER OUTPUT	(Battery SOC greater than 0%)
GENERATOR	Airman SDG220
GENERATOR CHARGE RATE	220 kVA / 176 kW
THREE-PHASE OUTPUT	210 kVA / 168 kW
SINGLE-PHASE OUTPUT	2.4 kW x 2
VOLTAGE	120V (Courtesy Outlets) • 480 (3Φ)
OPTIMAL CONTINUOUS LOAD	< 125 kW
MAX. CONTINUOUS AMP-LOAD @480V	264 A
CONTROLS	
CONTROL PANEL	10" Full Color Touch Screen
TELEMATICS	Generator & EBOSS™
ESG REPORTING	Yes
TECHNOLOGY	
BATTERY CHEMISTRY	Lithium Titanate Oxide (LTO)
BATTERY CAPACITY	125 kWh
TOTAL BATTERY LIFE OR ENERGY THROUGHOUT	10,000 MWh
CHARGE TIME (NO LOAD)	≈ 45 min
INVERTER OUTPUT MAX	320 kW
BATTERY LIFE*	
BATTERY TYPE	Lithium Titanate Oxide (LTO)
EST. CYCLE LIFE @ 77°F ENCLOSURE TEMPERATURES	90K Cycles at 90% DOD
EST. CYCLE LIFE @ 100°F ENCLOSURE TEMPERATURES	80K Cycles at 90% DOD
BATTERY LIFE (100°F @ 3 kW AVERAGE LOAD)	20 Years
OPERATING TEMPERATURES	
INVERTER COLD START TEMPERATURE (MINIMUM)	14°F
RUNNING OPERATING TEMPERATURE	-22°F to 130°F
ARCTIC PACKAGE OPERATING TEMP. (OPTIONAL)	-50°F to 130°F
FEATURES & OPTIONS	
TRAILER MOUNT	Available
SKID MOUNT	Available
PARALLEL CAPABILITY	Standard
COLD WEATHER/ARCTIC PACKAGES	Available

*Battery expected to retain 95% of its life after 7 years under 24/7 operation at 10% average load.

WEIGHTS & DIMENSIONS	
L x W x H (EBOSS ONLY)	≈ TBD
EBOSS WEIGHT ONLY	11,037 lbs
L x W x H (TRAILER AND GENERATOR)	≈ 262" x 74" x 75"
TOTAL WEIGHT (WITHOUT/WITH FUEL)	≈ 21,600 lbs / 24,000 lbs
INTEGRAL FUEL TANK CAPACITY	285 gal
GENERATOR COLD WEATHER OPTIONS	
BLOCK HEATER CCV HEATER	Available
FUEL FILTER HEATER FUEL TANK HEATER	Available
BATTERY BLANKET	Available
ENERGY BOSS COLD WEATHER OPTIONS	
Enclosure Heater	Available
WARRANTY	
ENERGY BOSS™ ONLY	2 Years
ENERGY BOSS™ WITH TRAILER & GENERATOR	2 Years, 2000 Hours
MANUFACTURER BATTERY WARRANTY	7 Years
SERVICE & SUPPORT	24/7, 365 Days
TRAINING	Henderson, NV or On Location

HOW THE ANA ENERGY BOSS™ BATTERY COMPARES



All specifications are subject to change without prior notice. Contact ANA Inc. for the most current information.

ANA ENERGY BOSS™ HYBRID ENERGY SYSTEMS BENEFITS

- Increased Fuel Efficiency
- Reduced Green House Gas Emissions
- Cost Effective High ROI
- Minimize Noise / Maximize Quiet Time
- Eliminate Maintenance Needs and Operational Hours by up to 75%
- Remote Access and Monitoring

SOLD AND SERVICED BY

ANA Nevada

1740 Raiders Way
Henderson, NV 89052

ANA S. California

11100 Hope Street
Cypress, CA 90630

ANA N. California

1315 Vinci Avenue
Sacramento, CA 95838

ANA South Carolina

1335 Hayne Street
Spartanburg, SC 29301



ANA, Inc.
Executive Office

1770 Raiders Way, Henderson, NV 89052

ANACORP.COM

(562) 450-3570 // sales@anacorp.com



ANA®

We make your world easier.