



**EBOSS™**  
**400kVA**  
 -HYBRID SYSTEM-  
**210/400 kVA** PRIME/PEAK  
**POWER**

**20X**  
 UP TO 20X THE  
 CYCLE LIFE OF  
 NMC/LFP BATTERIES

SAFE BATTERY  
 TECHNOLOGY  
 NO THERMAL RUNAWAY

WIDEST  
 TEMPERATURE  
 OPERATING RANGE  
 130°F  
 -22°F

**1Φ AND 3Φ**  
 SIMULTANEOUS  
 OUTPUT  
 VOLTAGES

REMOTE ACCESS  
 MONITORING &  
 TRACKING

INDUSTRIAL  
 GRADE  
 INVERTERS



**125 kWh**  
**ULTRA**  
**HIGH CYCLE**  
**LITHIUM**  
**TITANATE**  
**OXIDE (LTO)**  
**BATTERY CHEMISTRY**

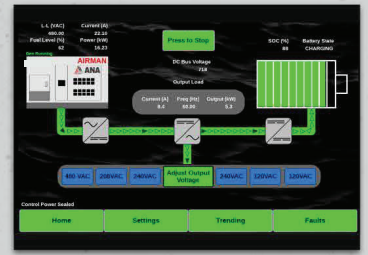
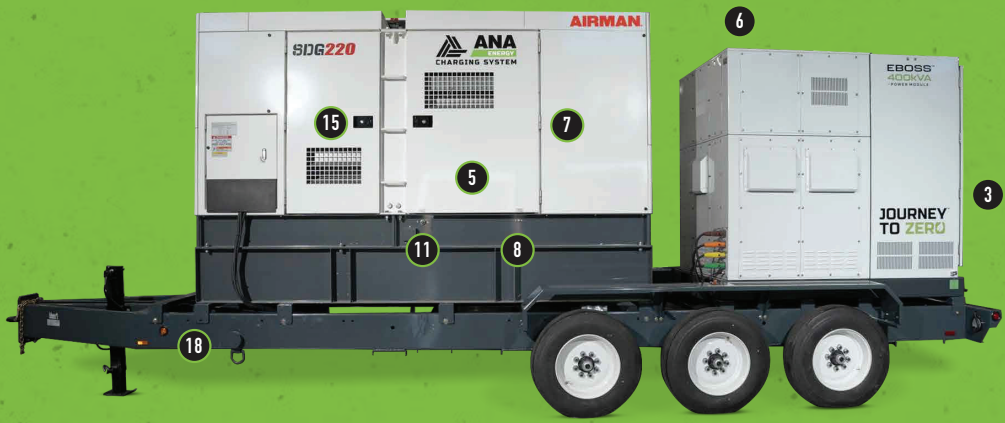


**JOHN DEERE-6068**  
 Tier 4 / CARB  
 Diesel Engine

- PERFORMANCE //**
- 1 - 10" Touchscreen Control Panel
  - 2 - Simul. Voltage Output Panel
  - 3 - Emergency Stop Button
  - 4 - Delta Demand Excitation™
  - 5 - Quietech™ Sound Attenuation
  - 6 - Telematics Monitoring System

- MAINTENANCE //**
- 7 - Lift-off Door Hinges
  - 8 - Ext. Fuel Tank Connections
  - 9 - 110% Fluid Containment
  - 10 - Service Extensions
  - 11 - Fuel & Containment Drains
  - 12 - Removable Trailer Fenders

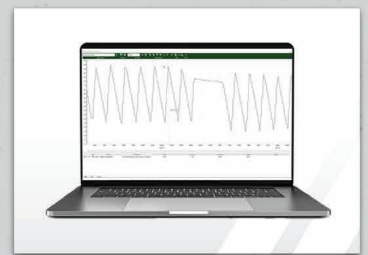
- CONSTRUCTION //**
- 13 - Power-coated Steel Enclosure
  - 14 - Stainless Steel Hardware
  - 15 - Lockable Access Doors
  - 16 - Automotive Door Seals
  - 17 - 285 Gallon Fuel Tank
  - 18 - Heavy-Duty Steel Trailer



1 | 10" Touchscreen Control Panel with color display



2 | Simultaneous Voltage Output Panel 120V - 20A x 2 | 480V 3Φ Cam-Loks™



6 | Telematics Monitoring System Remote access and monitoring of fuel, runtime, GPS, load and more



8 | External Fuel Tank Connections with 3-Way Selection Valve

**IMPROVE FUEL ECONOMY // LOWER CARBON EMISSIONS // REDUCE NOISE LEVELS**  
**THE INDUSTRY'S HIGHEST-QUALITY HYBRID POWER SYSTEMS**

# HYBRID SYSTEM MODEL

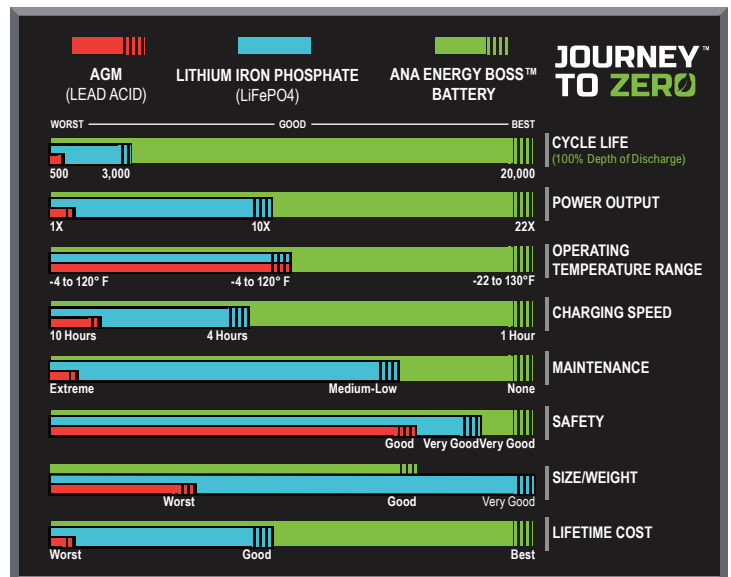
## EBOSS™ 400 kVA



SPECIFICATIONS	EBOSS™ 400kVA
HYBRID ENERGY SYSTEM	ANA EBOSS™
<b>MAXIMUM INTERMITTENT POWER OUTPUT</b>	(Battery SOC Greater than 5%)
THREE-PHASE	400 kVA / 320 kW
SINGLE-PHASE	N/A
FREQUENCY	60 Hz
SIMULTANEOUS VOLTAGE	120V (1Φ) • 480 (3Φ)
VOLTAGE REGULATION	Adjustable
MAX. INTERMITTENT AMP-LOAD @480V	481 A
MOTOR START RATING - 3 SECOND @480V	769 A
<b>MAXIMUM CONTINUOUS POWER OUTPUT</b>	(Battery SOC greater than 0%)
GENERATOR	Airman SDG220
GENERATOR CHARGE RATE	220 kVA / 176 kW
THREE-PHASE OUTPUT	210 kVA / 168 kW
SINGLE-PHASE OUTPUT	2.4 kW x 2
SIMULTANEOUS VOLTAGE	120V (1Φ) • 480V (3Φ)
OPTIMAL CONTINUOUS LOAD	< 125 kW
MAX. CONTINUOUS AMP-LOAD @208V	608 A
MAX. CONTINUOUS AMP-LOAD @480V	264 A
<b>CONTROLS</b>	
CONTROL PANEL	10" Full Color Touch Screen
TELEMATICS	Generator & EBOSS™
ESG REPORTING	Yes
<b>TECHNOLOGY</b>	
BATTERY CHEMISTRY	Lithium Titanate Oxide (LTO)
BATTERY CAPACITY	125 kWh
TOTAL BATTERY LIFE OR ENERGY THROUGHOUT	10,000 MWh
CHARGE TIME (NO LOAD)	≈ 45 min
INVERTER OUTPUT MAX	320 kW
<b>BATTERY LIFE*</b>	
BATTERY TYPE	Lithium Titanate Oxide (LTO)
EST. CYCLE LIFE @ 77°F ENCLOSURE TEMPERATURES	90K Cycles at 90% DOD
EST. CYCLE LIFE @ 100°F ENCLOSURE TEMPERATURES	80K Cycles at 90% DOD
BATTERY LIFE (100°F @ 3 kW AVERAGE LOAD)	20 Years
<b>OPERATING TEMPERATURES</b>	
INVERTER COLD START TEMPERATURE (MINIMUM)	14°F
RUNNING OPERATING TEMPERATURE	-22°F to 130°F
ARCTIC PACKAGE OPERATING TEMP. (OPTIONAL)	-50°F to 130°F
<b>FEATURES &amp; OPTIONS</b>	
TRAILER MOUNT	Available
SKID MOUNT	Available
PARALLEL CAPABILITY	Standard
COLD WEATHER/ARCTIC PACKAGES	Available

WEIGHTS & DIMENSIONS	
L x W x H (EBOSS ONLY)	≈ TBD
EBOSS WEIGHT ONLY	11,037 lbs
L x W x H (TRAILER AND GENERATOR)	≈ 262" x 74" x 75"
TOTAL WEIGHT (WITHOUT/WITH FUEL)	≈ 21,600 lbs / 24,000 lbs
INTEGRAL FUEL TANK CAPACITY	285 gal
GENERATOR COLD WEATHER OPTIONS	
BLOCK HEATER   CCV HEATER	Available
FUEL FILTER HEATER   FUEL TANK HEATER	Available
BATTERY BLANKET	Available
ENERGY BOSS COLD WEATHER OPTIONS	
Enclosure Heater	Available
WARRANTY	
ENERGY BOSS™ ONLY	2 Years
ENERGY BOSS™ WITH TRAILER & GENERATOR	2 Years, 2000 Hours
MANUFACTURER BATTERY WARRANTY	7 Years
SERVICE & SUPPORT	24/7, 365 Days
TRAINING	Henderson, NV or On Location

### HOW THE ANA ENERGY BOSS™ BATTERY COMPARES



\*Battery expected to retain 95% of its life after 7 years under 24/7 operation at 10% average load.

All specifications are subject to change without prior notice. Contact ANA Inc. for the most current information.

### ANA ENERGY BOSS™ HYBRID ENERGY SYSTEMS BENEFITS

- Increased Fuel Efficiency
- Reduced Green House Gas Emissions
- Cost Effective High ROI
- Minimize Noise / Maximize Quiet Time
- Eliminate Maintenance Needs and Operational Hours by up to 75%
- Remote Access and Monitoring

SOLD AND SERVICED BY

**ANA Nevada**

1740 Raiders Way  
Henderson, NV 89052

**ANA S. California**

11100 Hope Street  
Cypress, CA 90630

**ANA N. California**

1315 Vinci Avenue  
Sacramento, CA 95838

**ANA South Carolina**

1335 Hayne Street  
Spartanburg, SC 29301



**ANA, Inc.**  
Executive Office

1770 Raiders Way, Henderson, NV 89052

**ANACORP.COM**

(562) 450-3570 // sales@anacorp.com



**ANA®**

We make your world easier.