



**EBOSS™**  
**400kVA**  
 -POWER MODULE-  
 210/400 **kVA** PRIME/PEAK  
**POWER**

- 20x**

UP TO 20X THE  
CYCLE LIFE OF  
NMC/LFP BATTERIES
- SAFE BATTERY  
TECHNOLOGY  
NO THERMAL RUNAWAY
- WIDEST  
TEMPERATURE  
OPERATING RANGE  
130°F  
-22°F
- 480V**  
**3Φ**

480V 3-PHASE  
OUTPUT
- REMOTE ACCESS  
MONITORING &  
TRACKING
- INDUSTRIAL  
GRADE  
INVERTERS



2 - 480V 3-Phase Output Panel

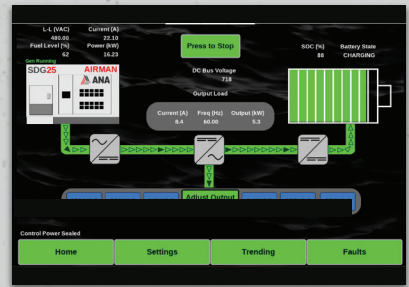
# 125 kWh ULTRA HIGH CYCLE

LITHIUM TITANIUM OXIDE (LTO) BATTERY CHEMISTRY

- PERFORMANCE //**
- 1 - 10" Touchscreen Control Panel
  - 2 - CAM-Lok™ Input Connection
  - 3 - Emergency Stop Button
  - 4 - Telematics Monitoring System
  - 5 - 480V 3-Phase Output Panel

- CONSTRUCTION //**
- 6 - Powder-coated Steel Enclosure
  - 7 - Stainless Steel Hardware
  - 8 - Lockable Access Doors

- MAINTENANCE //**
- 9 - Service Extensions



1 | 10" Touchscreen Control Panel with color display



4 | Telematics Monitoring System  
 Remote access and monitoring of fuel, runtime, GPS, load and more



5 | 480V 3-Phase Output Panel  
 480V 3Φ Cam-Loks™  
 120V - Courtesy Outlets

**IMPROVE FUEL ECONOMY // LOWER CARBON EMISSIONS // REDUCE NOISE LEVELS**  
**THE INDUSTRY'S HIGHEST-QUALITY HYBRID POWER SYSTEMS**

# POWER MODULE MODEL

## EBOSS™ 400 kVA



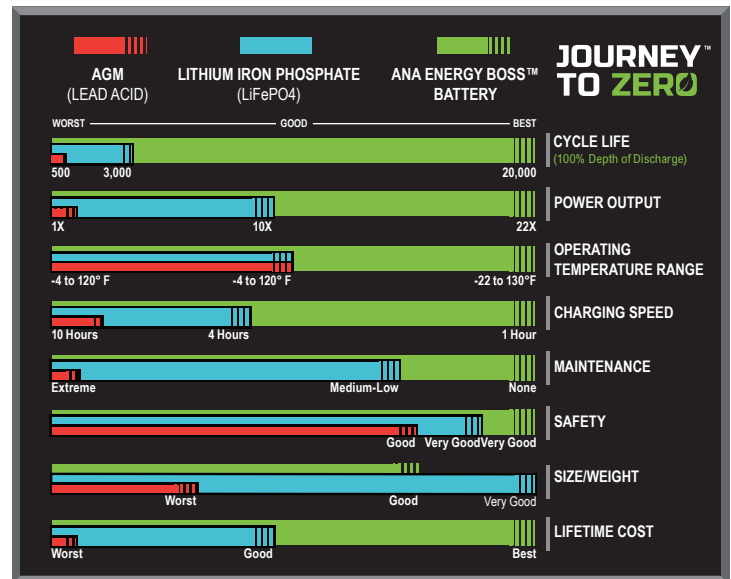
SPECIFICATIONS	EBOSS™ 400 kVA Power Module
HYBRID ENERGY SYSTEM	ANA EBOSS™
<b>MAXIMUM INTERMITTENT POWER OUTPUT</b>	(Battery SOC Greater than 5%)
THREE-PHASE	400 kVA / 320 kW
SINGLE-PHASE	N/A
FREQUENCY	60 Hz
VOLTAGE	120V (Courtesy Outlets) • 480 (3Φ)
VOLTAGE REGULATION	Adjustable
MAX. INTERMITTENT AMP-LOAD @480V	481 A
MOTOR START RATING - 3 SECOND @480V	769 A
<b>MAXIMUM CONTINUOUS POWER OUTPUT</b>	(Battery SOC greater than 0%)
THREE-PHASE OUTPUT	210 kVA / 168 kW
SINGLE-PHASE OUTPUT	2.4 kW x 2
OPTIMAL CONTINUOUS LOAD	< 125 kW
MAX. CONTINUOUS AMP-LOAD @480V	264 A
<b>CONTROLS</b>	
CONTROL PANEL	10" Full Color Touch Screen
TELEMATICS	EBOSS™
ESG REPORTING	Yes
<b>TECHNOLOGY</b>	
BATTERY CHEMISTRY	Lithium Titanate Oxide (LTO)
BATTERY CAPACITY	125 kWh
TOTAL BATTERY LIFE OR ENERGY THROUGHOUT	10,000 MWh
CHARGE TIME (NO LOAD)	≈ 45 min
INVERTER OUTPUT MAX	320 kW
<b>BATTERY LIFE*</b>	
BATTERY TYPE	Lithium Titanate Oxide (LTO)
EST. CYCLE LIFE @ 77°F ENCLOSURE TEMPERATURES	90K Cycles at 90% DOD
EST. CYCLE LIFE @ 100°F ENCLOSURE TEMPERATURES	80K Cycles at 90% DOD
BATTERY LIFE (100°F @ 3 kW AVERAGE LOAD)	20 Years
<b>OPERATING TEMPERATURES</b>	
INVERTER COLD START TEMPERATURE (MINIMUM)	14°F
RUNNING OPERATING TEMPERATURE	-22°F to 130°F
ARCTIC PACKAGE OPERATING TEMP. (OPTIONAL)	-50°F to 130°F
<b>FEATURES &amp; OPTIONS</b>	
SKID MOUNT	Available
PARALLEL CAPABILITY	Standard
COLD WEATHER/ARCTIC PACKAGES	Available

\*Battery expected to retain 95% of its life after 7 years under 24/7 operation at 10% average load.

WEIGHTS & DIMENSIONS	
L x W x H	91" x 111" x 69"
EBOSS WEIGHT	11,037 lbs
EBOSS™ COLD WEATHER OPTIONS	
Enclosure Heater	Available
WARRANTY	
EBOSS™ ONLY	2 Years
MANUFACTURER BATTERY WARRANTY	7 Years
SERVICE & SUPPORT	24/7, 365 Days
TRAINING	Henderson, NV or On Location

**Full-Hybrid Version Also Available!**  
Ask your sales rep about all possible configurations.

### HOW THE ANA ENERGY BOSS™ BATTERY COMPARES



All specifications are subject to change without prior notice. Contact ANA Inc. for the most current information.

### ANA ENERGY BOSS™ HYBRID ENERGY SYSTEMS BENEFITS

- Increased Fuel Efficiency
- Reduced Green House Gas Emissions
- Cost Effective High ROI
- Minimize Noise / Maximize Quiet Time
- Eliminate Maintenance Needs and Operational Hours by up to 75%
- Remote Access and Monitoring

SOLD AND SERVICED BY

**ANA Nevada**

1740 Raiders Way  
Henderson, NV 89052

**ANA S. California**

11100 Hope Street  
Cypress, CA 90630

**ANA N. California**

1315 Vinci Avenue  
Sacramento, CA 95838

**ANA South Carolina**

1335 Hayne Street  
Spartanburg, SC 29301



**ANA, Inc.**  
Executive Office

1770 Raiders Way, Henderson, NV 89052

**ANACORP.COM**

(562) 450-3570 // sales@anacorp.com



**ANA®**

We make your world easier.