



EBOSS™
400kVA
 -POWER MODULE-

210/400
kVA **PRIME/PEAK**
POWER

20X
 UP TO 20X THE
 CYCLE LIFE OF
 NMC/LFP BATTERIES

**SAFE BATTERY
 TECHNOLOGY**
 NO THERMAL RUNAWAY

**WIDEST
 TEMPERATURE
 OPERATING RANGE**

1Φ AND 3Φ
 SIMULTANEOUS
 OUTPUT
 VOLTAGES

**REMOTE ACCESS
 MONITORING &
 TRACKING**

**INDUSTRIAL
 GRADE
 INVERTERS**



**125 kWh ULTRA
 HIGH CYCLE
 LITHIUM TITANATE OXIDE (LTO)
 BATTERY CHEMISTRY**

PERFORMANCE //

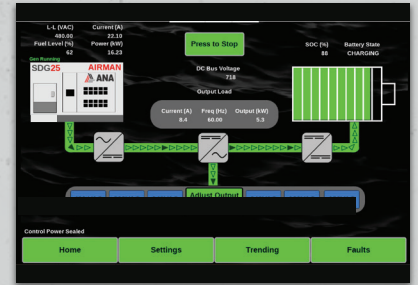
- 1 - 10" Touchscreen Control Panel
- 2 - CAM-Lok™ Input Connection
- 3 - Emergency Stop Button
- 4 - Telematics Monitoring System
- 5 - Simul. Voltage Output Panel

CONSTRUCTION //

- 6 - Powder-coated Steel Enclosure
- 7 - Stainless Steel Hardware
- 8 - Lockable Access Doors

MAINTENANCE //

- 9 - Service Extensions



1 | 10" Touchscreen Control Panel
 with color display



4 | Telematics Monitoring System



5 | Simultaneous Voltage Output Panel
 120V - 20A x 2 | 480V 3Φ Cam-Loks™

IMPROVE FUEL ECONOMY // LOWER CARBON EMISSIONS // REDUCE NOISE LEVELS
THE INDUSTRY'S HIGHEST-QUALITY HYBRID POWER SYSTEMS

POWER MODULE MODEL

EBOSS™ 400 kVA

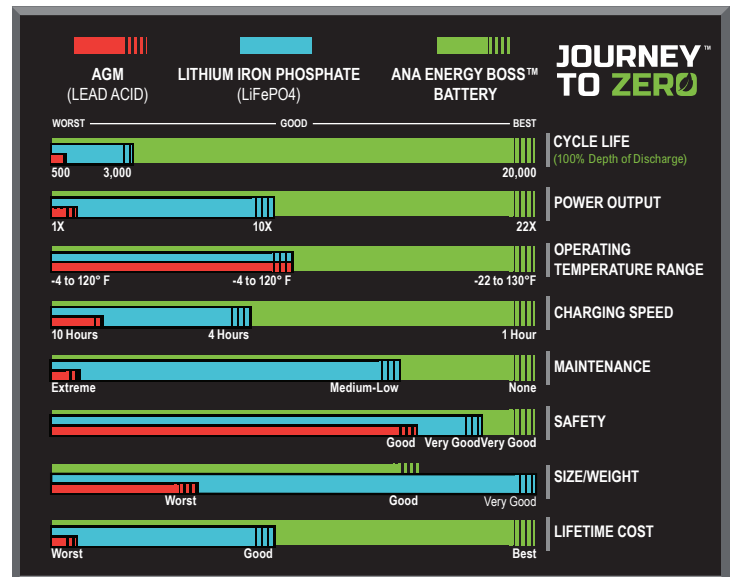


SPECIFICATIONS	EBOSS™ 400 kVA Power Module
HYBRID ENERGY SYSTEM	ANA EBOSS™
MAXIMUM INTERMITTENT POWER OUTPUT	(Battery SOC Greater than 5%)
THREE-PHASE	400 kVA / 320 kW
SINGLE-PHASE	N/A
FREQUENCY	60 Hz
SIMULTANEOUS VOLTAGE	120V (1Φ) - 480 (3Φ)
VOLTAGE REGULATION	Adjustable
MAX. INTERMITTENT AMP-LOAD @480V	481 A
MOTOR START RATING - 3 SECOND @480V	769 A
MAXIMUM CONTINUOUS POWER OUTPUT	(Battery SOC greater than 0%)
THREE-PHASE OUTPUT	210 kVA / 168 kW
SINGLE-PHASE OUTPUT	2.4 kW x 2
OPTIMAL CONTINUOUS LOAD	< 125 kW
MAX. CONTINUOUS AMP-LOAD @208V	608 A
MAX. CONTINUOUS AMP-LOAD @480V	264 A
CONTROLS	
CONTROL PANEL	10" Full Color Touch Screen
TELEMATICS	EBOSS™
ESG REPORTING	Yes
TECHNOLOGY	
BATTERY CHEMISTRY	Lithium Titanate Oxide (LTO)
BATTERY CAPACITY	125 kWh
TOTAL BATTERY LIFE OR ENERGY THROUGHOUT	10,000 MWh
CHARGE TIME (NO LOAD)	≈ 45 min
INVERTER OUTPUT MAX	320 kW
BATTERY LIFE*	
BATTERY TYPE	Lithium Titanate Oxide (LTO)
EST. CYCLE LIFE @ 77°F ENCLOSURE TEMPERATURES	90K Cycles at 90% DOD
EST. CYCLE LIFE @ 100°F ENCLOSURE TEMPERATURES	80K Cycles at 90% DOD
BATTERY LIFE (100°F @ 3 kW AVERAGE LOAD)	20 Years
OPERATING TEMPERATURES	
INVERTER COLD START TEMPERATURE (MINIMUM)	14°F
RUNNING OPERATING TEMPERATURE	-22°F to 130°F
ARCTIC PACKAGE OPERATING TEMP. (OPTIONAL)	-50°F to 130°F
FEATURES & OPTIONS	
SKID MOUNT	Available
PARALLEL CAPABILITY	Standard
COLD WEATHER/ARCTIC PACKAGES	Available

WEIGHTS & DIMENSIONS	
L x W x H	91" x 111" x 69"
EBOSS WEIGHT	11,037 lbs
EBOSS™ COLD WEATHER OPTIONS	
Enclosure Heater	Available
WARRANTY	
EBOSS™ ONLY	2 Years
MANUFACTURER BATTERY WARRANTY	7 Years
SERVICE & SUPPORT	24/7, 365 Days
TRAINING	Henderson, NV or On Location

Full-Hybrid Version Also Available!
Ask your sales rep about all possible configurations.

HOW THE ANA ENERGY BOSS™ BATTERY COMPARES



*Battery expected to retain 95% of its life after 7 years under 24/7 operation at 10% average load.
 All specifications are subject to change without prior notice. Contact ANA Inc. for the most current information.

ANA ENERGY BOSS™ HYBRID ENERGY SYSTEMS BENEFITS

- Increased Fuel Efficiency
- Reduced Green House Gas Emissions
- Cost Effective High ROI
- Minimize Noise / Maximize Quiet Time
- Eliminate Maintenance Needs and Operational Hours by up to 75%
- Remote Access and Monitoring

SOLD AND SERVICED BY

ANA Nevada

1740 Raiders Way
 Henderson, NV 89052

ANA S. California

11100 Hope Street
 Cypress, CA 90630

ANA N. California

1315 Vinci Avenue
 Sacramento, CA 95838

ANA South Carolina

1335 Hayne Street
 Spartanburg, SC 29301



ANA, Inc.
 Executive Office

1770 Raiders Way, Henderson, NV 89052

ANACORP.COM

(562) 450-3570 // sales@anacorp.com



ANA®

We make your world easier.