



**20X**

UP TO 20X THE  
CYCLE LIFE OF  
NMC/LFP BATTERIES



SAFE BATTERY  
TECHNOLOGY  
NO THERMAL RUNAWAY



WIDEST  
TEMPERATURE  
OPERATING RANGE

**1 AND 3Φ**

SIMULTANEOUS  
OUTPUT  
VOLTAGES



REMOTE ACCESS  
MONITORING &  
TRACKING



INDUSTRIAL  
GRADE  
INVERTERS



**25 kWh  
ULTRA  
HIGH CYCLE  
LITHIUM  
TITANATE  
OXIDE (LTO)  
BATTERY CHEMISTRY**  
PATENTS PENDING

**PERFORMANCE //**

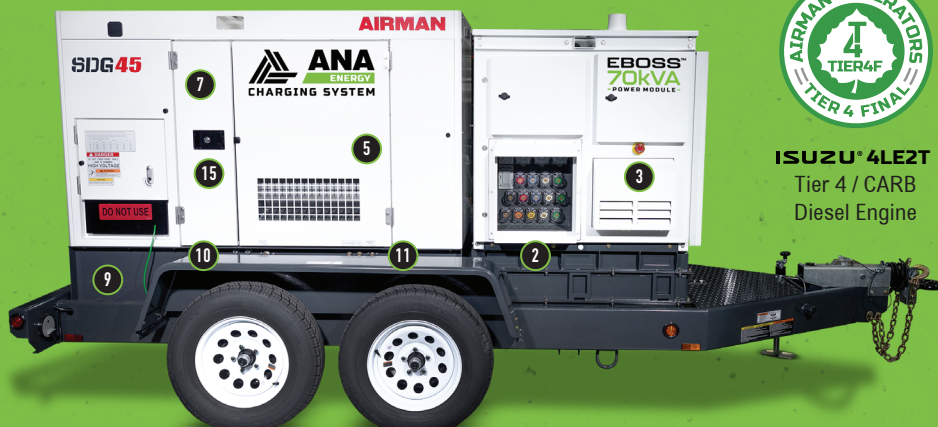
- 1 - 10" Touchscreen Control Panel
- 2 - Simul. Voltage Output Panel
- 3 - Emergency Stop Button
- 4 - Delta Demand Excitation™
- 5 - QuietTech™ Sound Attenuation
- 6 - Telematics Monitoring System

**MAINTENANCE //**

- 7 - Lift-off Door Hinges
- 8 - Ext. Fuel Tank Connections
- 9 - 110% Fluid Containment
- 10 - Service Extensions
- 11 - Fuel & Containment Drains
- 12 - Removable Trailer Fenders

**CONSTRUCTION //**

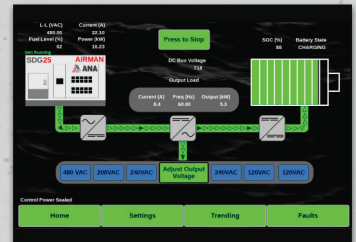
- 13 - Power-coated Steel Enclosure
- 14 - Stainless Steel Hardware
- 15 - Lockable Access Doors
- 16 - Automotive Door Seals
- 17 - 51.5 Gallon Fuel Tank
- 18 - Heavy-Duty Steel Trailer



**ISUZU 4LE2T**  
Tier 4 / CARB  
Diesel Engine

**EBOSS™  
70kVA  
- HYBRID SYSTEM -**

**45/70  
kVA PRIME/PEAK  
POWER**



**1 | 10" Touchscreen Control Panel  
with color display**



**2 | Simultaneous Voltage Output Panel**  
120V - 20A x 2 | 240V - 50A x 3  
1Φ 240V & 3Φ 208/480v Cam-Loks™



**6 | Telematics Monitoring System**  
Remote access and monitoring of fuel,  
runtime, GPS, load and more



**8 | External Fuel Tank Connections  
with 3-Way Selection Valve**

**IMPROVE FUEL ECONOMY // LOWER CARBON EMISSIONS // REDUCE NOISE LEVELS**  
**THE INDUSTRY'S HIGHEST-QUALITY HYBRID POWER SYSTEMS**

# HYBRID SYSTEM MODEL

## EBOSS™ 70 kVA



SPECIFICATIONS	
HYBRID ENERGY SYSTEM	ANA EBOSS™
<b>MAXIMUM INTERMITTENT POWER OUTPUT</b>	(Battery SOC Greater than 5%)
THREE-PHASE	70 kVA / 56 kW
SINGLE-PHASE	47 kVA / 37 kW
FREQUENCY	60 Hz
SIMULTANEOUS VOLTAGE	120/240 (1Φ) • 208/480 (3Φ)
VOLTAGE REGULATION	Adjustable
MAX. INTERMITTENT AMP-LOAD @208V	194 A
MAX. INTERMITTENT AMP-LOAD @480V	84 A
MOTOR START RATING - 3 SECOND @208V	291 A
MOTOR START RATING - 3 SECOND @480V	126 A
<b>MAXIMUM CONTINUOUS POWER OUTPUT</b>	(Battery SOC greater than 0%)
GENERATOR	Airman SDG45
GENERATOR CHARGE RATE	45 kVA / 36 kW
THREE-PHASE OUTPUT	42 kVA / 33 kW
SINGLE-PHASE OUTPUT	28 kVA / 22 kW
SIMULTANEOUS VOLTAGE	120/240 (1Φ) • 208/480 (3Φ)
MAX. CONTINUOUS AMP-LOAD @208V	119 A
MAX. CONTINUOUS AMP-LOAD @480V	54 A
CONTROLS	
CONTROL PANEL	10" Full Color Touch Screen
TELEMATICS	Generator & EBOSS™
ESG REPORTING	Yes
TECHNOLOGY	
BATTERY CHEMISTRY	Lithium Titanate Oxide (LTO)
BATTERY CAPACITY	25 kWh
TOTAL BATTERY LIFE OR ENERGY THROUGHOUT	2,000 MWh
CHARGE TIME (NO LOAD)	≈ 45 Minutes
INVERTER OUTPUT MAX	56 kW
BATTERY LIFE*	
BATTERY TYPE	Lithium Titanate Oxide (LTO)
EST. CYCLE LIFE @ 77°F ENCLOSURE TEMPERATURES	90K Cycles at 90% DOD
EST. CYCLE LIFE @ 100°F ENCLOSURE TEMPERATURES	80K Cycles at 90% DOD
BATTERY LIFE (100°F @ 3 kW AVERAGE LOAD)	20 Years
OPERATING TEMPERATURES	
INVERTER COLD START TEMPERATURE (MINIMUM)	14°F
RUNNING OPERATING TEMPERATURE	-22°F to 130°F
ARCTIC PACKAGE OPERATING TEMP. (OPTIONAL)	-50°F to 130°F
FEATURES & OPTIONS	
TRAILER MOUNT	Available
SKID MOUNT	Available
ROOF MOUNTED SOLAR FOR EBOSS BATTERY, 3 PANELS (1.6 kW)	Available
PARALLEL CAPABILITY	Available
COLD WEATHER/ARCTIC PACKAGES	Available

WEIGHTS & DIMENSIONS	
L x W x H x (EBOSS™ ONLY)	55" x 44" x 62"
EBOSS™ WEIGHT ONLY	2,700 lbs
L x W x H (TRAILER AND GENERATOR)	167" x 71" x 76"
TOTAL WEIGHT (WITHOUT/WITH FUEL)	6950 / 7600 lbs
INTEGRAL FUEL TANK CAPACITY	80.5 gal
GENERATOR COLD WEATHER OPTIONS	
BLOCK HEATER   CCV HEATER	Available Now
FUEL FILTER HEATER   FUEL TANK HEATER	Available Now
BATTERY BLANKET	Available Now
EBOSS™ COLD WEATHER OPTIONS	
Enclosure Heater	Available Now
Magnetic Ventilation Covers	Available Now
WARRANTY	
EBOSS™ ONLY	2 Years
EBOSS™ WITH TRAILER & GENERATOR	2 Years, 2000 Hours
MANUFACTURER BATTERY WARRANTY	7 Years
SERVICE & SUPPORT	24/7, 365 Days
TRAINING	Henderson, NV or On Location

\*Battery expected to retain 95% of its life after 7 years under 24/7 operation at 3kW average load.

## EBOSS™ Solar 1.6

Solar Power to help charge your Energy Boss Battery System during the day



- Utility Scale Mono Bifacial Solar Modules
- High Powered 3-Phase Quad Microinverter
- UL1741/ CSA C22.2 No. 107.1-16/ UL1741SA/ UL1741SB/ IEEE1547
- Integrated Safety Protection
- 96.5% Peak Efficiency
- Custom Solar Drawer with Locking Mechanism
- IRA Compliant

All specifications are subject to change without prior notice. Contact ANA Inc. for the most current information.

## ANA ENERGY BOSS™ HYBRID ENERGY SYSTEMS BENEFITS

- Increased Fuel Efficiency
- Reduced Green House Gas Emissions
- Cost Effective High ROI
- Minimize Noise / Maximize Quiet Time
- Eliminate Maintenance Needs and Operational Hours by up to 75%
- Remote Access and Monitoring

SOLD AND SERVICED BY

**ANA**  
**Nevada**

1740 Raiders Way  
Henderson, NV 89052

**ANA**  
**S. California**

11100 Hope Street  
Cypress, CA 90630

**ANA**  
**N. California**

1315 Vinci Avenue  
Sacramento, CA 95838

**ANA**  
**South Carolina**

1335 Hayne Street  
Spartanburg, SC 29301



**ANA, Inc.**  
*Executive Office*

1770 Raiders Way, Henderson, NV 89052

**ANACORP.COM**

(562) 450-3570 // sales@anacorp.com



**ANA®**

We make your world easier.

© 2025 Alliance North America, Inc. All rights reserved.

Airman® is a registered trademark of Hokuetsu Industries Co. Ltd. All other trademarks are property of their respective owners. Form EBOSSREV0225