

EXPORTING AND IMPORTING COMAP FILES



CLICK SECTION TITLE BELOW TO JUMP TO SECTION

SECTION 1

Exporting your files via USB Stick

SECTION 3

Importing your files via USB Stick

SECTION 2

Exporting your files via a Laptop
and USB Cable

SECTION 4

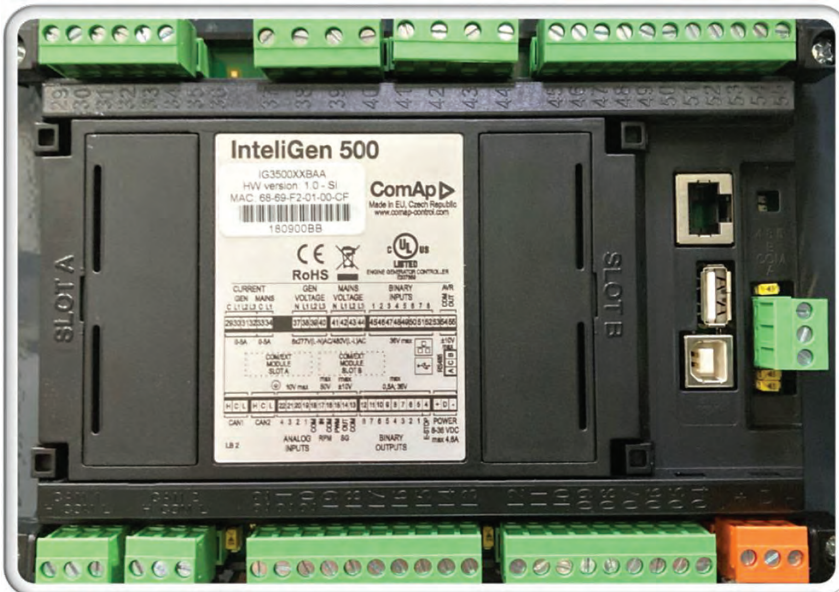
Importing your files via a Laptop
and USB Cable

SECTION 1 - EXPORTING COMAP FILES

Exporting your files via USB Stick



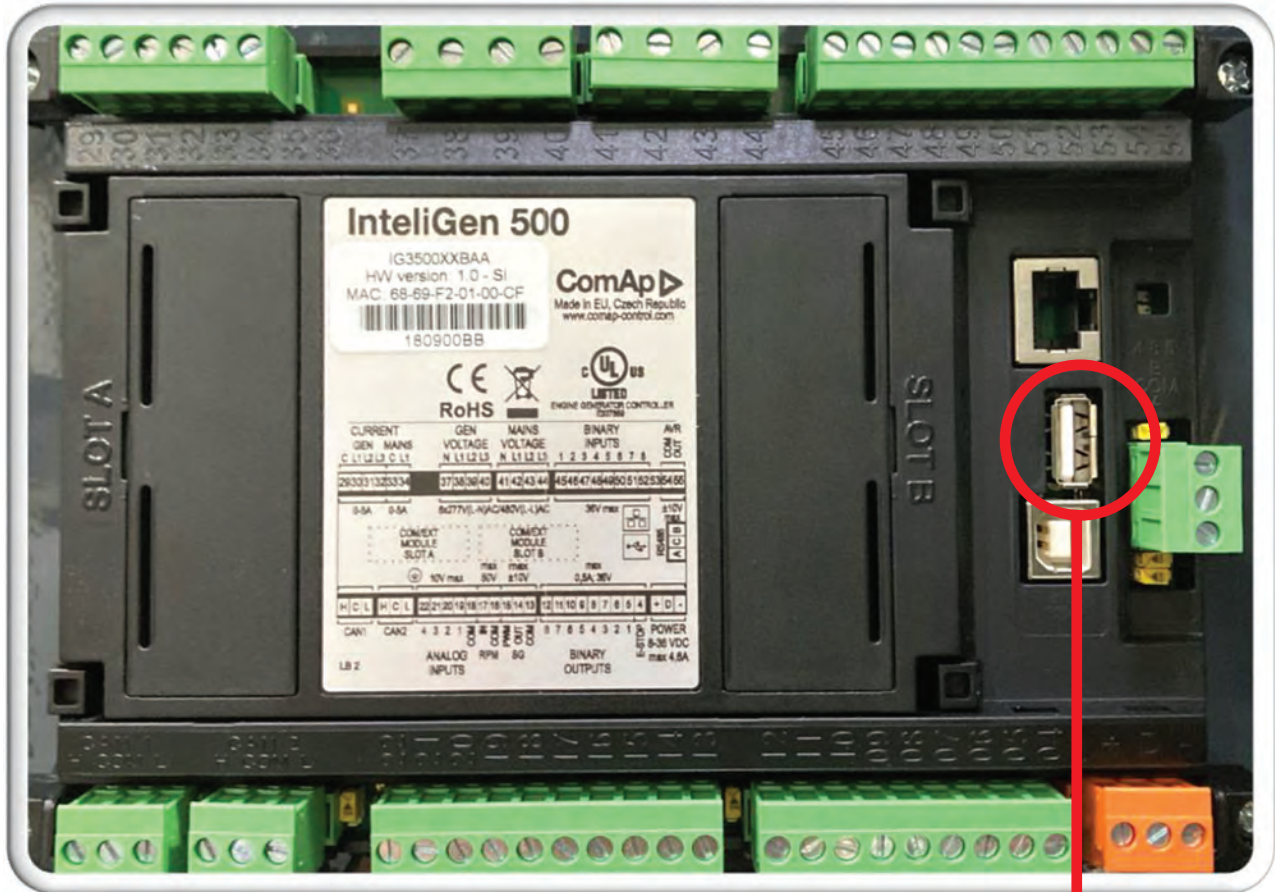
**ComAp
IntelGen 500 Controller**
– FRONT VIEW –



**ComAp
IntelGen 500 Controller**
– BACK VIEW –

SECTION 1 - EXPORTING COMAP FILES

Exporting your files via USB Stick



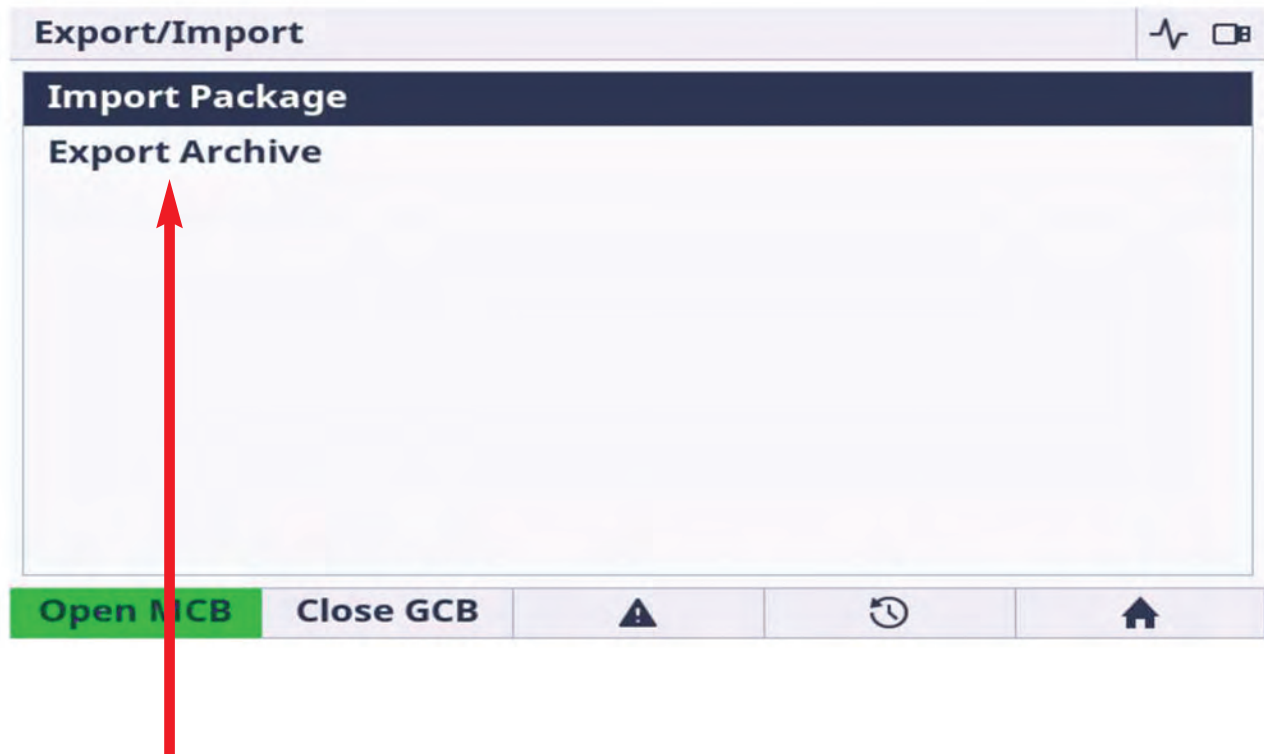
Locate the USB port on the back of the ComAp controller and plug your USB stick into the port.

Look at the front screen of the ComAp controller for next steps.



SECTION 1 - EXPORTING COMAP FILES

Exporting your files via USB Stick



Once the USB stick is connected this message will appear on the front screen.

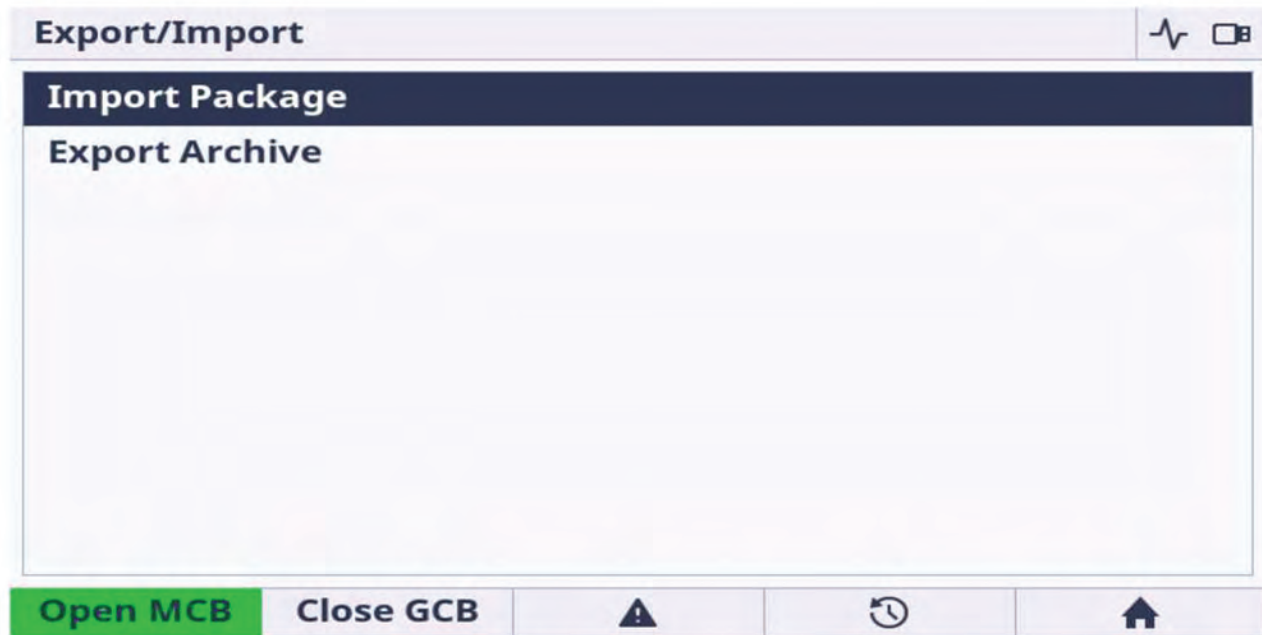
Click on **Export Archive**.

Please note the following while performing this task:

- If the USB stick is NOT CONNECTED, the export function is not available and will be indicated by greyed text.
- If the USB stick is CONNECTED, the archive files are exported to a fixed folder located on the USB stick. The folder will automatically be created if one does not exist.

SECTION 1 - EXPORTING COMAP FILES

Exporting your files via USB Stick



Please note the following while performing this task:

- The export function is not protected by a password and the controller must be “ON” with the generator NOT running. You will see a message stating whether the controller is ready or not.
- The screen will display if the export was successful or failed and will restart after the task is complete.
- A waiting dialog will be displayed to indicate that the export is in progress.
- When finished, one of two messages will appear:
 - Successful Archive Export**
 - Failed Archive Export for any reason**

SECTION 1 - EXPORTING COMAP FILES

Exporting your files via USB Stick



Please note the following while performing this task:

- After the export function is complete, you may upload the file to your computer for loading via IntelliConfig.
- Or, send the file for troubleshooting assistance to:
- When emailing the ANA Support Department, simply copy and paste the file in the body of the email.

If the file is too large, you may convert the file to a Zip File or create a OneDrive link and share the link in the email.

support@anacorp.com

SECTION 2 - EXPORTING COMAP FILES

Exporting your files via a Laptop and USB Cable

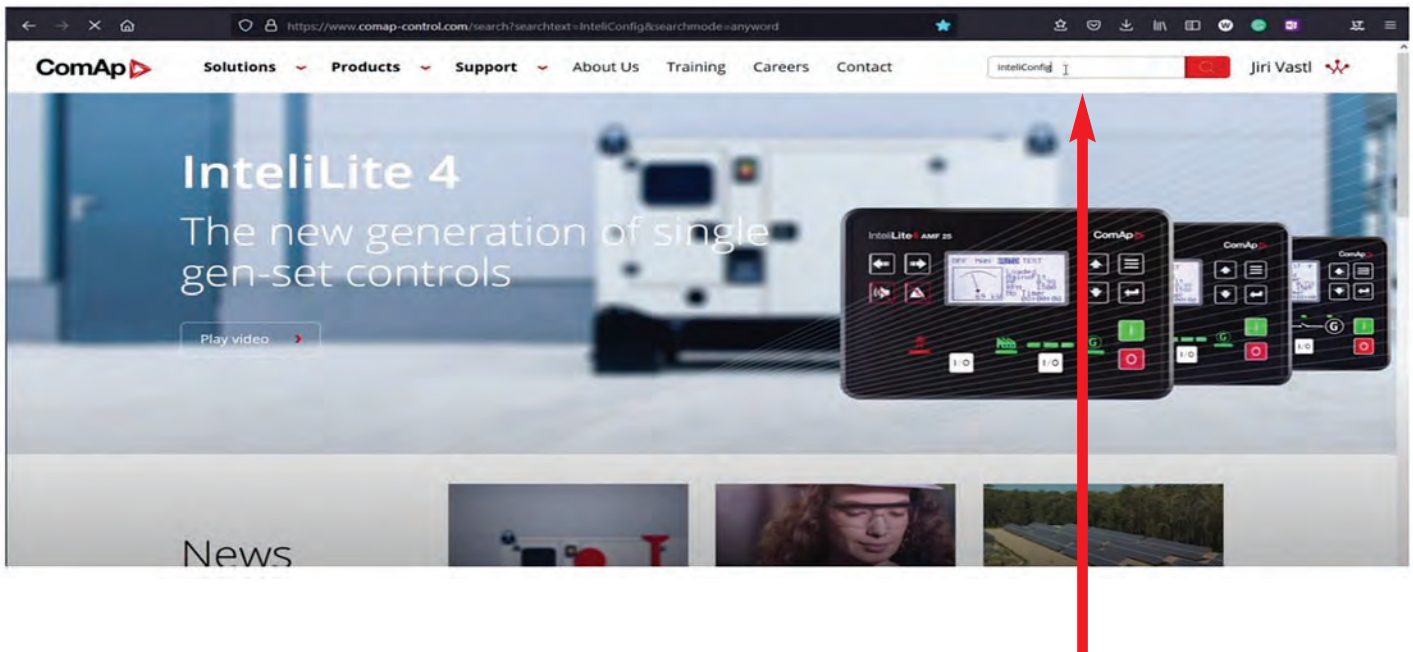


Locate the USB ports (A) and (B) on the laptop and the back of the ComAp controller.

Plug in the USB cable for each respective port. The wide USB Type A cable end will insert into the laptop and the square USB Type B cable end will connect to the ComAp controller.

SECTION 2 - EXPORTING COMAP FILES

Exporting your files via a Laptop and USB Cable



Next, you will need to load the InteliConfig software on your laptop. The software is only available by creating a user account on the ComAp site.

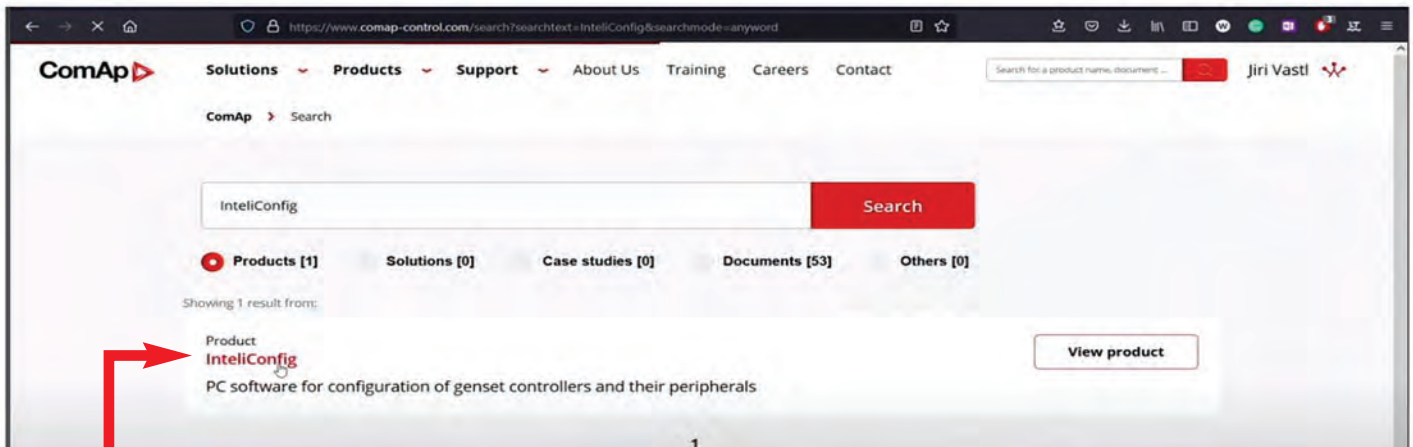
- Use the search bar on the ComAp website and enter “InteliConfig” to locate the software link.

Download the software at:

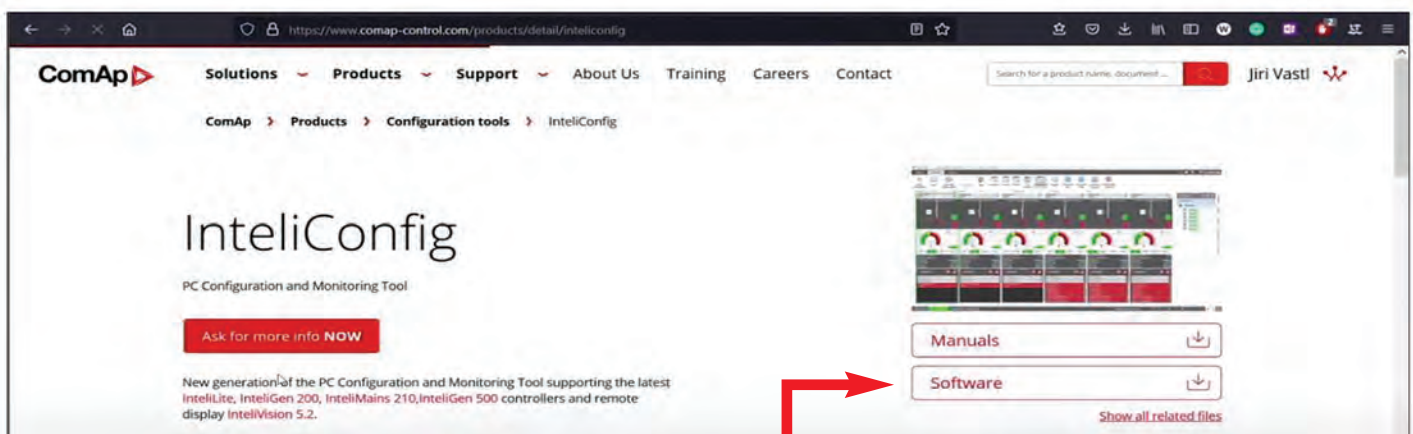
www.comap-control.com/products

SECTION 2 - EXPORTING COMAP FILES

Exporting your files via a Laptop and USB Cable



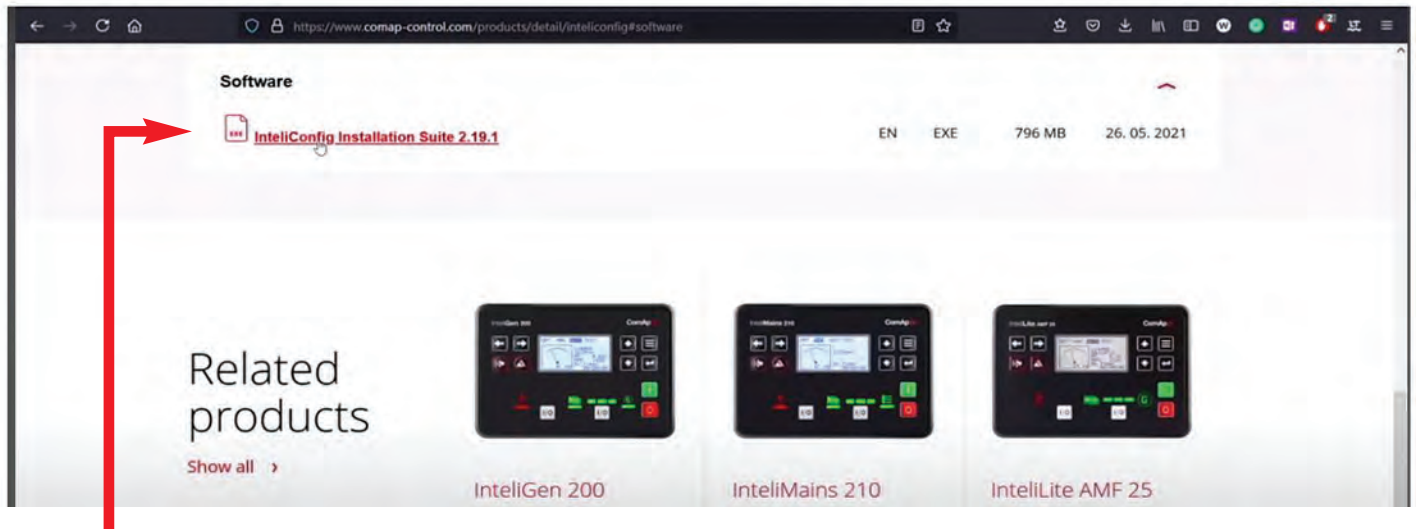
Click on the **InteliConfig** link under the PRODUCT tab.



Next, click on the **Software** tab on the right side of the screen.

SECTION 2 - EXPORTING COMAP FILES

Exporting your files via a Laptop and USB Cable



Click on the **IntelConfig Installation Suite** link.

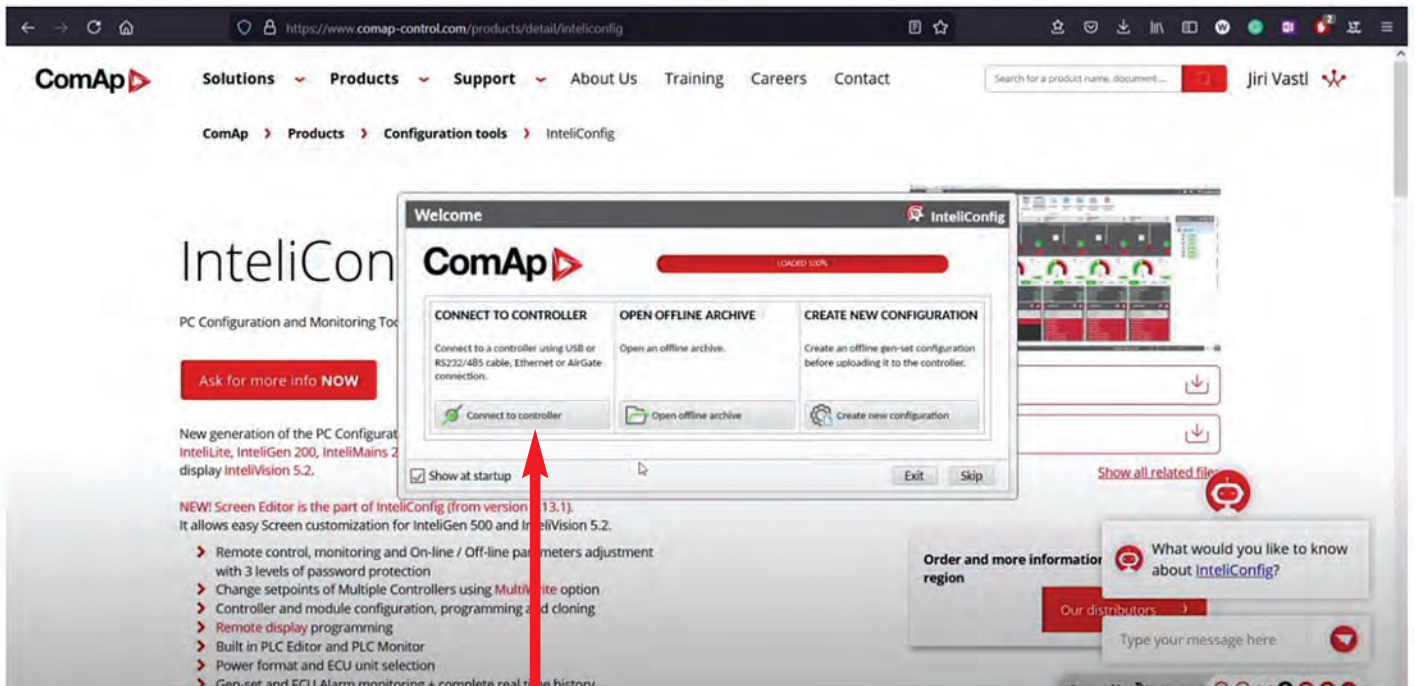


Once the software is downloaded, this desktop icon appear.

You can rename the file if you prefer.

SECTION 2 - EXPORTING COMAP FILES

Exporting your files via a Laptop and USB Cable

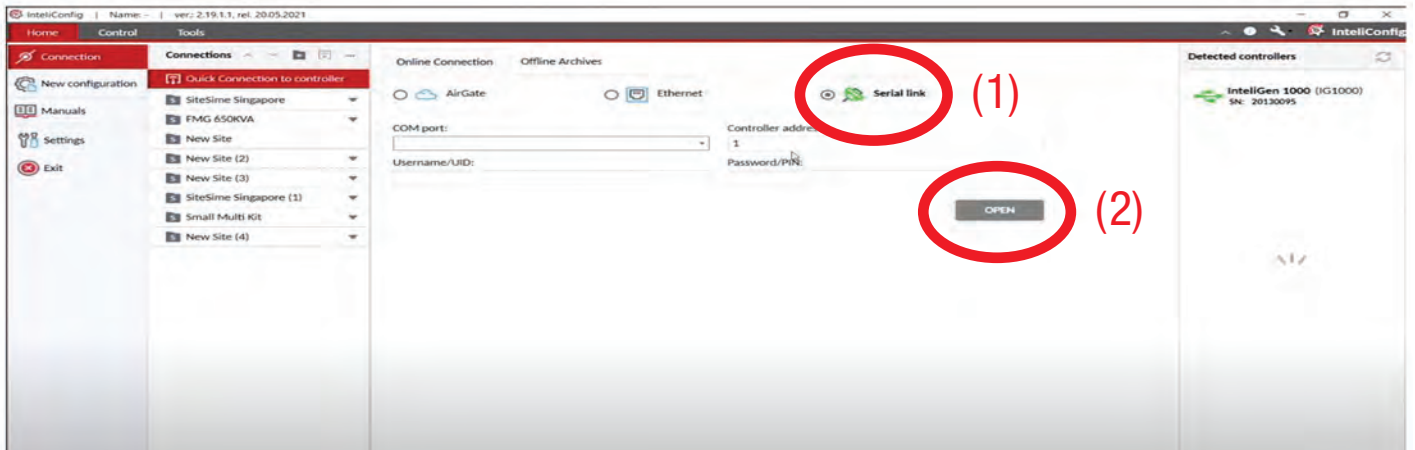


After the program has loaded, you will have three options to choose from.

Select **Connect to controller**.

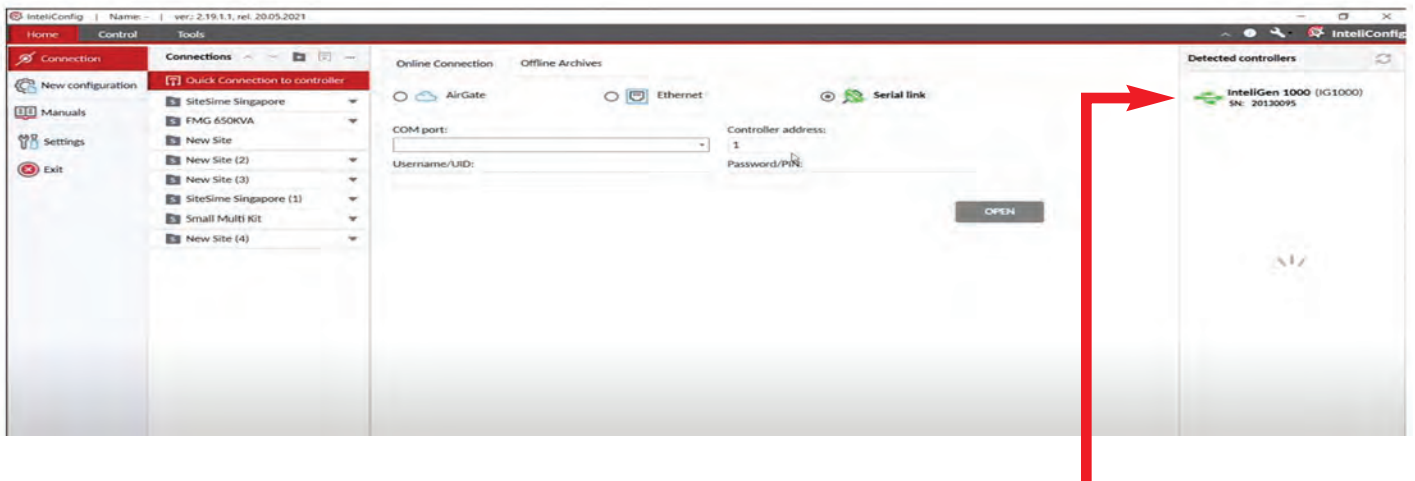
SECTION 2 - EXPORTING COMAP FILES

Exporting your files via a Laptop and USB Cable



Choose the type of connection.

- For the USB connection, choose **Serial Link (1)** and click **Open (2)**.



If the connection is proper, the program will auto detect the ComAp controller.

- The detected controller will appear on the right side. Click to establish a connection.

SECTION 2 - EXPORTING COMAP FILES

Exporting your files via a Laptop and USB Cable



Once the connection is complete, you will be able to view the file via IntelliConfig.

- You can begin to diagnose the file, save the file, or send it to ANA Support for troubleshooting.

Your screen should look identical to the image above.

SECTION 2 - EXPORTING COMAP FILES

Exporting your files via a Laptop and USB Cable



Click the **Tool** tab (1) at the top of the screen. Then, click **Save Clone** (2).

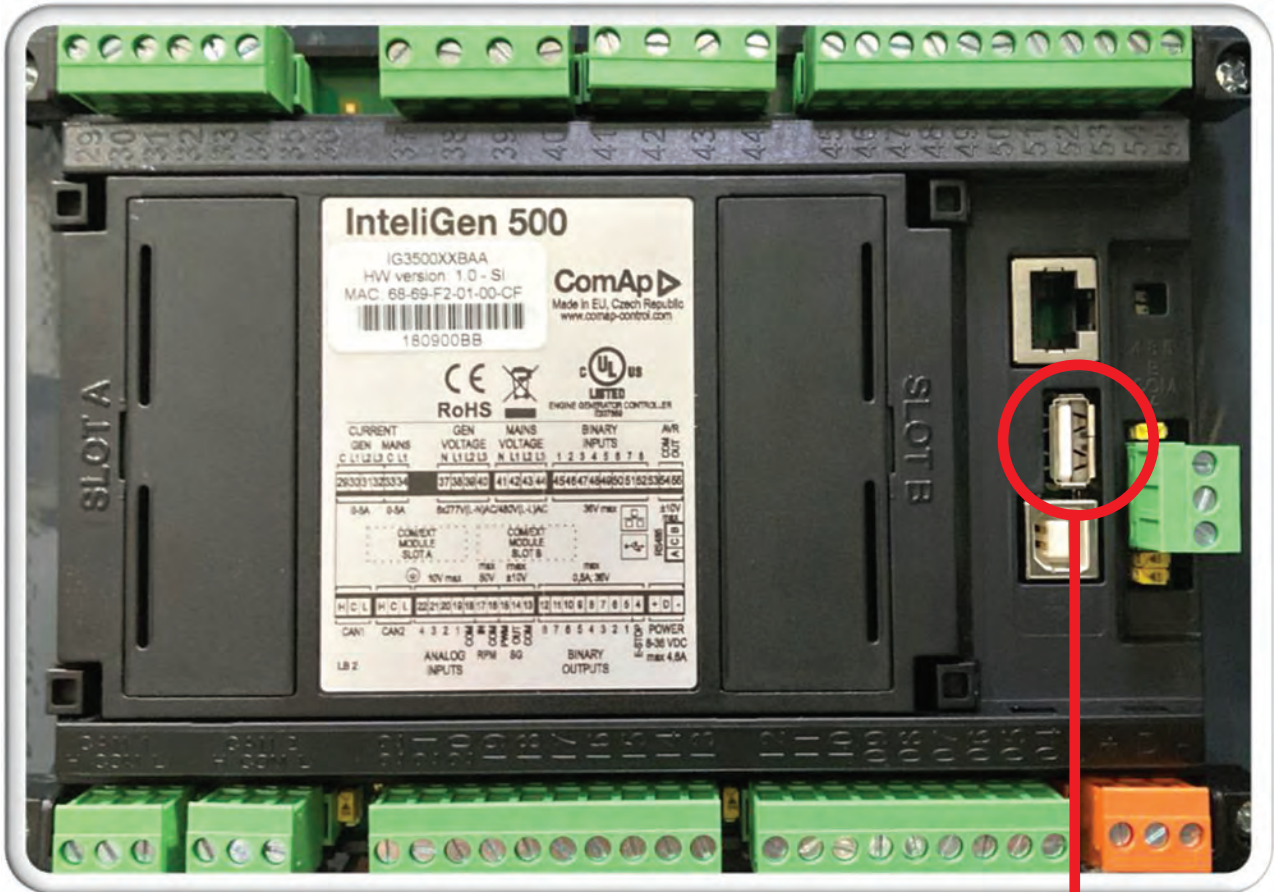
This will save the file you currently have open.

- When emailing the ANA Support Department, simply copy and paste the file in the body of the email.

If the file is too large, you may convert the file to a Zip File or create a OneDrive link and share the link in the email.

SECTION 3 - IMPORTING COMAP FILES

Importing your files via USB Stick



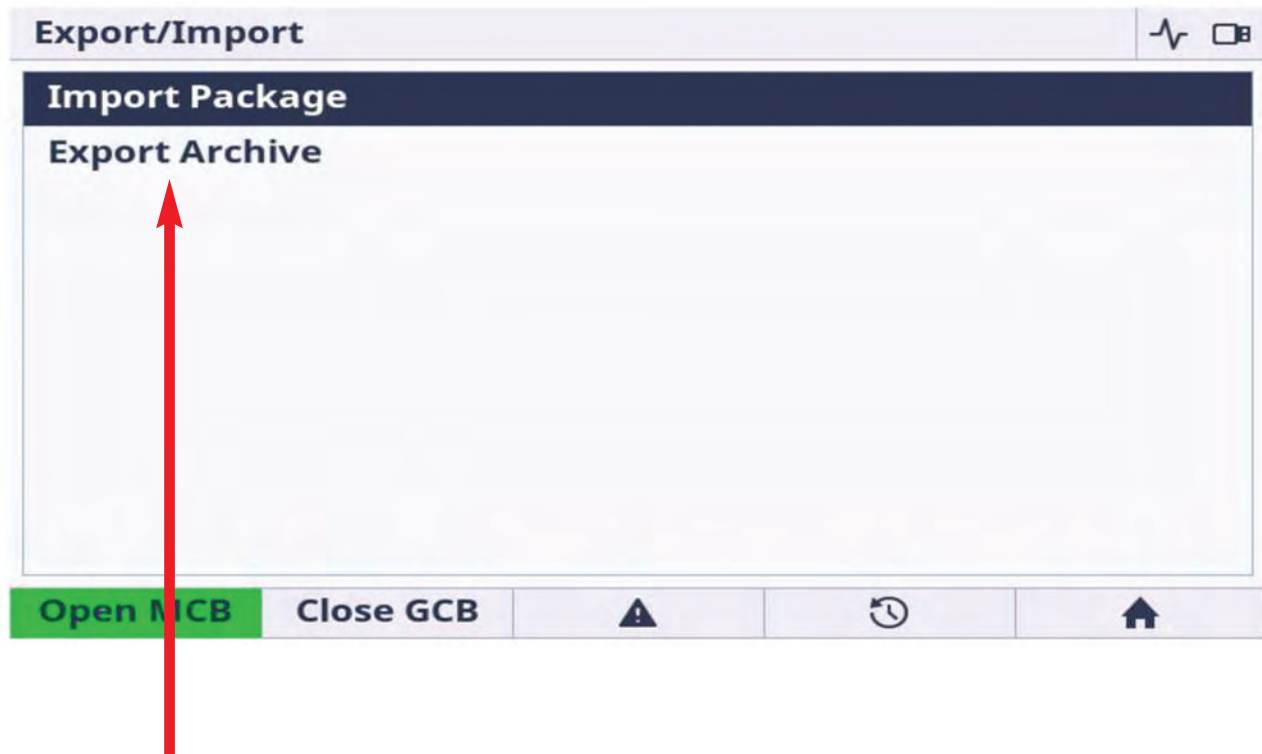
Locate the USB port on the back of the ComAp controller and plug your USB stick into the port.

Look at the front screen of the ComAp controller for next steps.



SECTION 3 - IMPORTING COMAP FILES

Importing your files via USB Stick



Once the USB stick is connected this message will appear on the front screen.

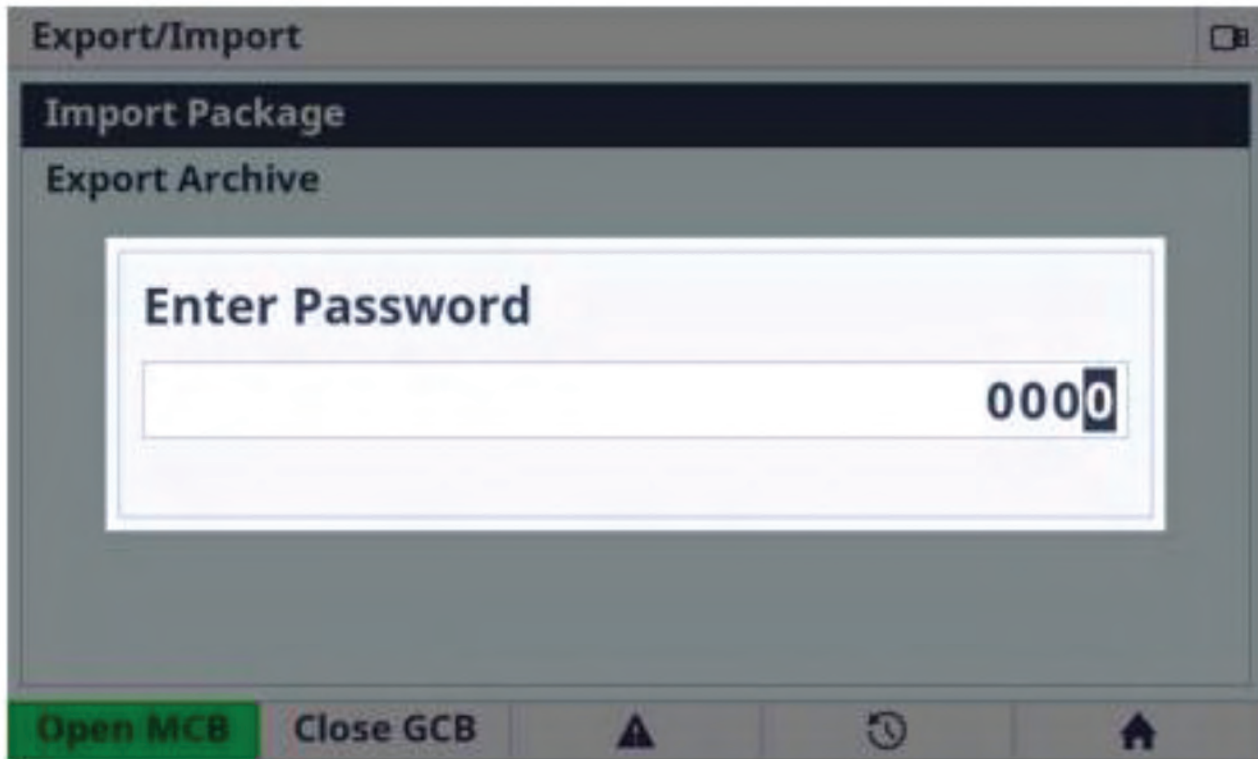
Click on **Import Package**.

Please note the following while performing this task:

- Only files that have been created via IntelliConfig can be imported.
- The files that are created via the IntelliConfig software are saved as a (.pcg3) file. Only .pcg3 files can be uploaded to the controller.

SECTION 3 - IMPORTING COMAP FILES

Importing your files via USB Stick



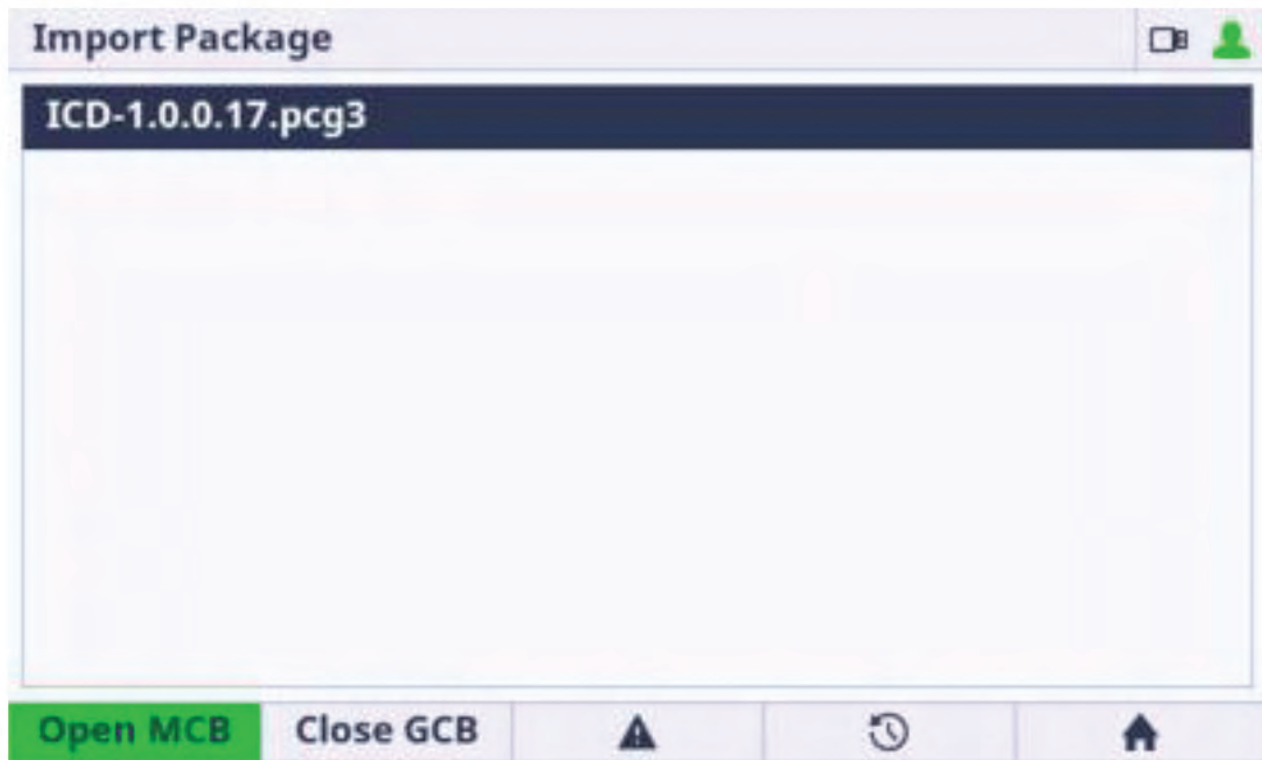
The Import function is always protected by the Administrator Password (Level 3).

Unless the password is entered, the file will never upload.

- After the password is entered, the controller will indicate a message to let the user know the state of the controller.
- The controller must be ON and the generator NOT running. You will see a message indicating if the controller is ready or not.

SECTION 3 - IMPORTING COMAP FILES

Importing your files via USB Stick






If the state of the controller and generator are good, the software will allow you to select a file to import.

Choose the .pcg3 file from the list.

- NOTE: Only .pcg3 files can be uploaded and a maximum of 100 files can be displayed at one time.
- The controller will display a message if the file is not .pcg3 compatible or if the files is invalid or corrupted.

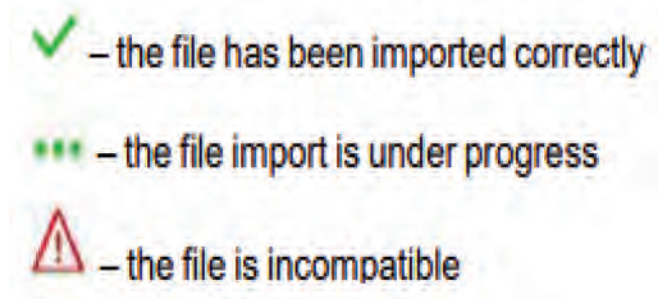
SECTION 3 - IMPORTING COMAP FILES

Importing your files via USB Stick

Import Package			 
Name	Actual	Package	
HMI Logo	N/A	N/A	
HMI Fonts	1.0.0.0	1.0.0.0	
HMI Images	1.0.0.5	1.0.0.5	
HMI Firmware	1.0.0.900	1.0.0.17	
HMI Service screen	N/A	N/A	

When the import process has started, you will be able to monitor the progress status on the display.

The top image is an example of what the import will look like.



- Only three icons will appear on the display to inform the user of the process. See above.
- When the process is complete, the controller will automatically reboot and be ready for use afterwards.

SECTION 4 - IMPORTING COMAP FILES

Importing your files via a Laptop and USB Cable

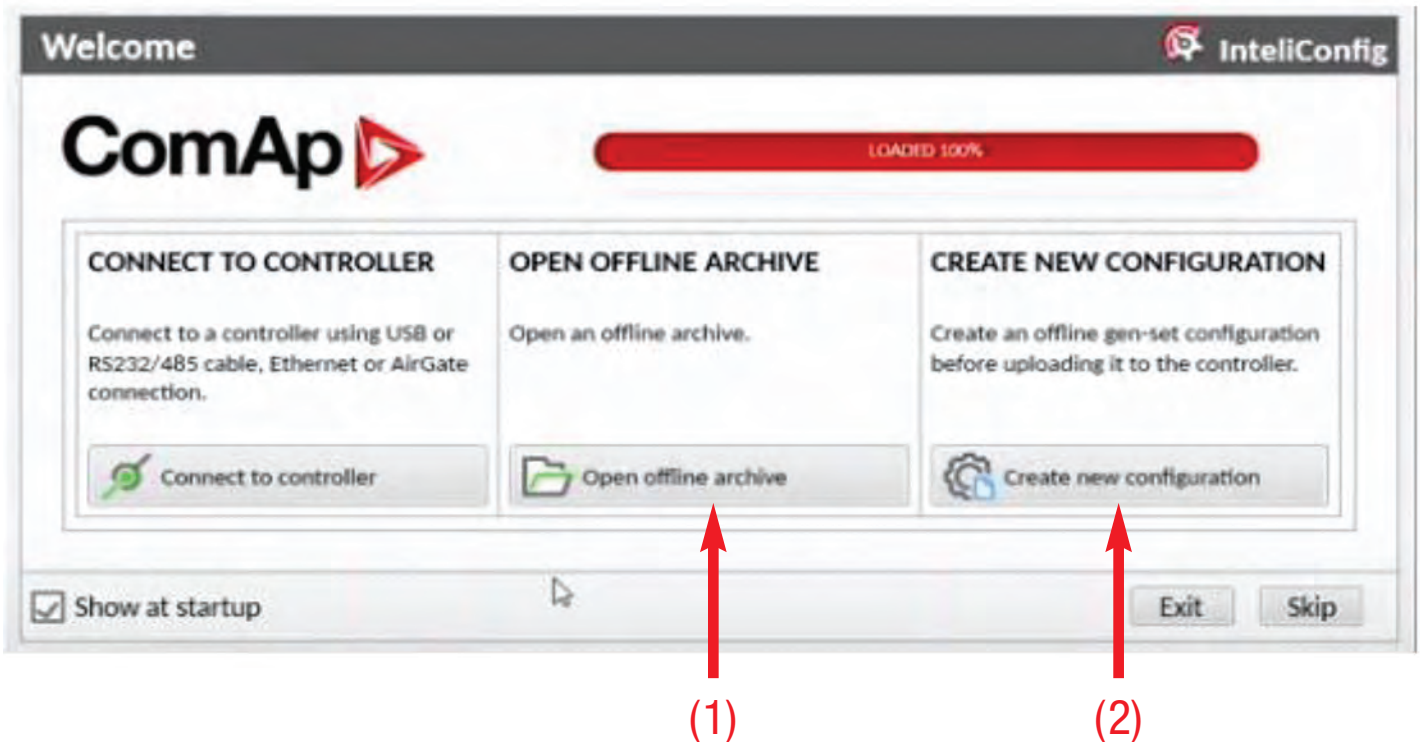


Locate the USB ports (A) and (B) on the laptop and the back of the ComAp controller.

Plug in the USB cable for each respective port. The wide USB Type A cable end will insert into the laptop and the square USB Type B cable end will connect to the ComAp controller.

SECTION 4 - IMPORTING COMAP FILES

Importing your files via a Laptop and USB Cable



If you do not have the ComAp IntelliConfig program on your computer, see pages 8-10.

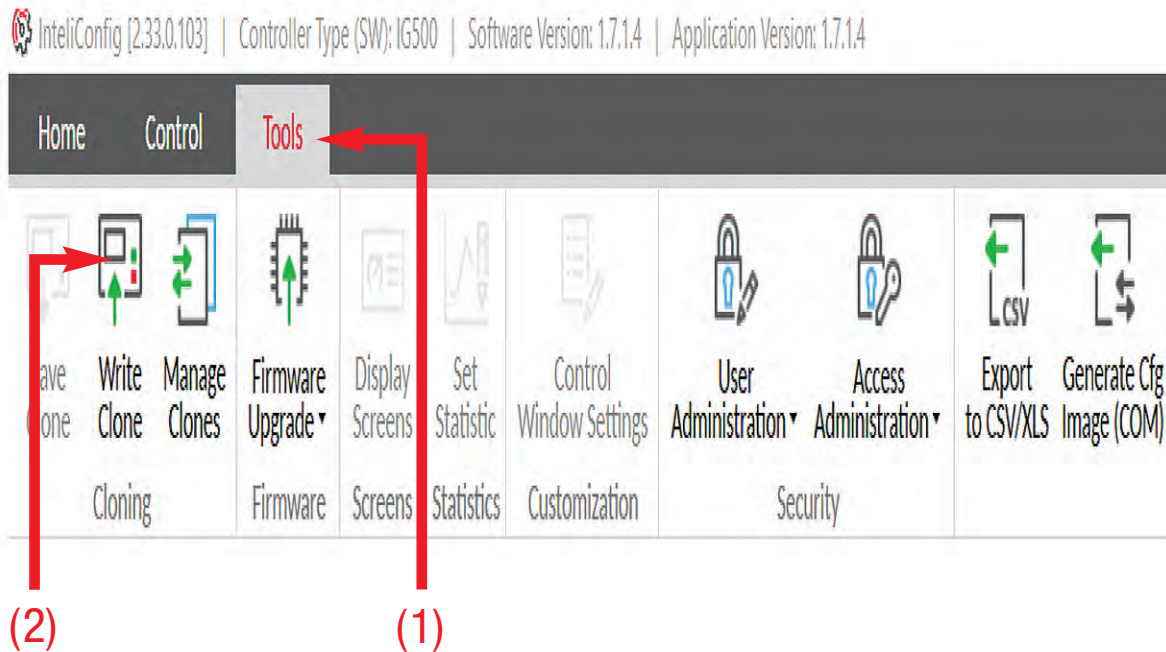
or

Choose the **Open Offline Archive** tab (1) if you have a file ready to upload.

- If you need to create a new configuration to upload, choose the **Create New Configuration** tab (2).

SECTION 4 - IMPORTING COMAP FILES

Importing your files via a Laptop and USB Cable

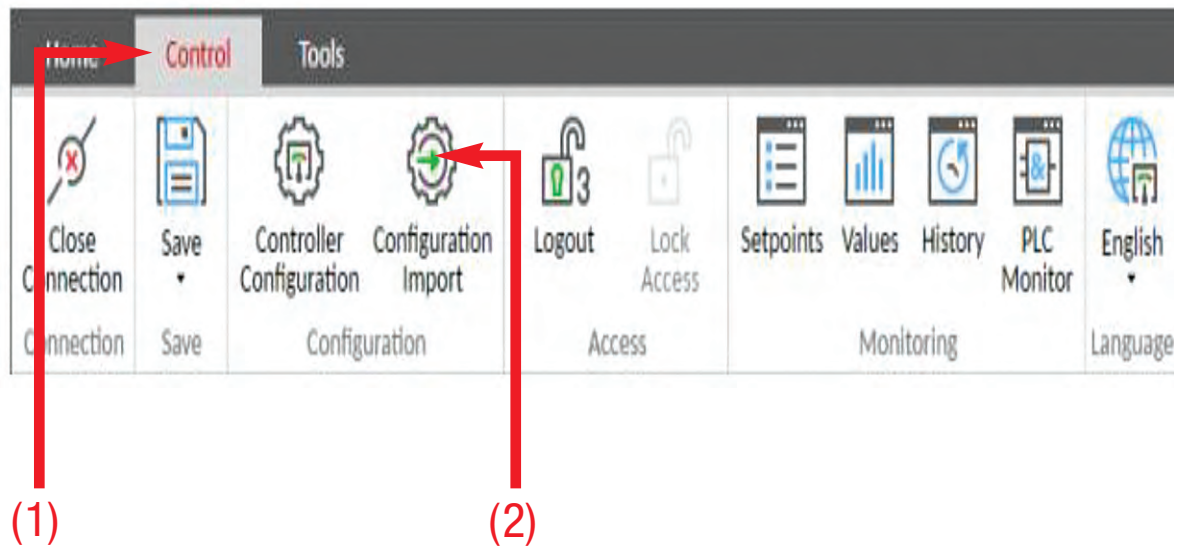


If you are importing an **ARCHIVE FILE**, choose the **Tools** tab (1) at the top of the screen.

Next, click the **Write Clone** (2) button to start the importing process.

SECTION 4 - IMPORTING COMAP FILES

Importing your files via a Laptop and USB Cable

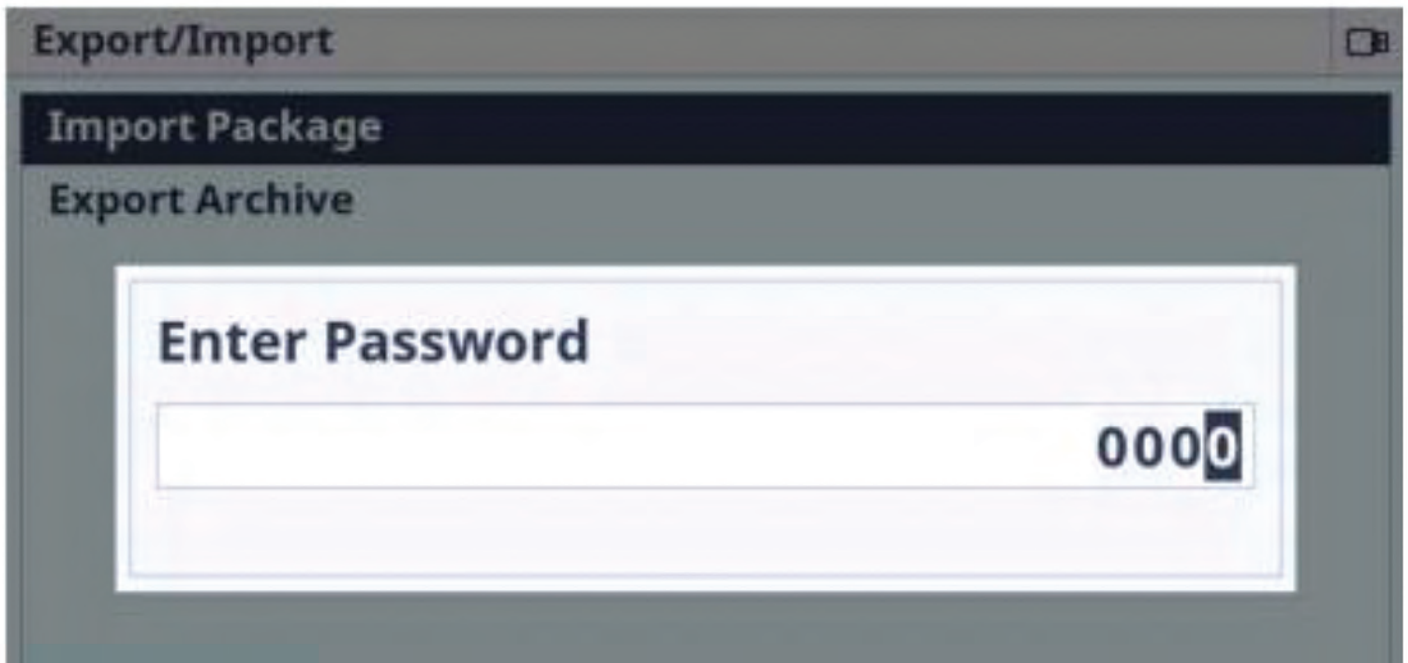


If you are importing a **CONFIGURATION**, choose the **Control** tab (1) at the top of the screen.

Next, click the **Configuration Import** (2) button. Choose the archived file and then click **OPEN**.

SECTION 4 - IMPORTING COMAP FILES

Importing your files via a Laptop and USB Cable



Remember, Import function is always protected by the Administrator Password (Level 3).

Unless the password is entered, the file will never upload.

After the password is entered, the controller will give an option for

 **OK and Restart**

By clicking this, you will reset the controller and the unit will have the new file ready for use.